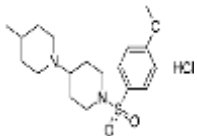


PRODUCT: TASIN-1 hydrochloride

ALTERNATE NAMES: 1'-[[4-Methoxyphenyl)sulfonyl]-4-methyl-1,4'-bipiperidine hydrochloride

CATALOG NUMBER: B2088-1,5

AMOUNT: 1 mg, 5 mg

STRUCTURE:

MOLECULAR FORMULA: C₁₈H₂₉ClN₂O₃S

MOLECULAR WEIGHT: 388.95

CAS NUMBER: 1678515-13-3

APPEARANCE: White to off-white solid

SOLUBILITY: H₂O (~ 2 mg/ml)

PURITY: ≥98% by HPLC

STORAGE: Store at -20 °C. Protect from air and moisture

DESCRIPTION: TASIN-1 (Truncated APC Selective INhibitor-1) is a novel truncated APC selective inhibitor, selectively killing colorectal cancer cells that express truncated APC by reducing cellular cholesterol levels and inducing apoptotic cell death through the ER stress/ROS/JNK signaling in colon cancer cells.

REFERENCES: Cully, M. (2016). *Nat. Rev. Drug Discov.* **15**, 820-821.

HANDLING: Do not take internally. Wear gloves and mask when handling the product! Avoid contact by all modes of exposure.

RELATED PRODUCTS:

Betulinic Acid (Cat. No. 1552-25)
 Bexarotene (Cat. No. 1575-5, 50)
 Camptothecin (Cat. No. 1039-1, 50MG, 500MG)
 10-Hydroxycamptothecin (Cat. No. B1995-50, 250)
 Capecitabine (Cat. No. 1741-100, 1000)
 Carboplatin (Cat. No. 1553-100)
 Cisplatin (Cat. No. 1550-100,1000)
 Colchicine (Cat. No. 1519-1000)
 Daunorubicin.HCl (1524-10,50,500)
 Docetaxel (Cat. No. 2232-10, 50)
 Doxorubicin HCl (Cat. No. 1527-5)
 (-)-Epigallocatechin gallate (Cat. No. 1841-50)
 Epothilone B (Cat. No. 2012-1, 5)
 Fludarabine Phosphate (Cat. No. 1763-10, 50)
 Gemcitabine Hydrochloride (Cat. No. 1759-25, 100)
 Genistein (Cat. No. 1533-10)
 Lasalocid Sodium (Cat. No. B1587-5,25)
 Ilimaquinone (Cat. No. 2038-100)
 Nedaplatin (Cat. No. 1576-5)
 Nimustine hydrochloride (Cat. No. B2069-10, 50)
 Nocodazole (Cat. No. 2185-10, 50)
 Oxaliplatin (Cat. No. 1577-25)
 Piperlongumine (Cat. No. 1919-10, 50)
 Paclitaxel (Cat. No. 1567-25)
 Solamargine (Cat. No. B1586-5,25)
 Tamoxifen Citrate (Cat. No. 1551-1000)
 TASIN-1 hydrochloride (Cat. No. B2088-1,5)
 Vinorelbine Tartrate (Cat. No. 1957-5, 25)

USAGE: **FOR RESEARCH USE ONLY! Not to be used in humans**