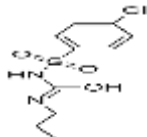


**PRODUCT: Chlorpropamide****ALTERNATE NAMES:** 1-(*p*-Chlorobenzenesulfonyl)-3-propylurea**CATALOG NUMBER:** B2105-100, 500**AMOUNT:** 100 mg, 500 mg**STRUCTURE:****MOLECULAR FORMULA:** C<sub>10</sub>H<sub>13</sub>ClN<sub>2</sub>O<sub>3</sub>S**MOLECULAR WEIGHT:** 276.74**CAS NUMBER:** 94-20-2**APPEARANCE:** White solid**SOLUBILITY:** EtOH (50 mg/ml)**PURITY:** ≥97%**STORAGE:** Store at -20 °C. Protect from air and light**DESCRIPTION:** Chlorpropamide belongs to the sulfonyleurea class of insulin secretagogues, is an oral antihyperglycemic agent used for the treatment of non-insulin-dependent diabetes mellitus (NIDDM). It acts by stimulating β cells of the pancreas to release insulin.**REFERENCE:** Rowe, W.S. (1964). *Med. J. Aust.* **2**, 844.**HANDLING:** Do not take internally. Wear gloves and mask when handling the product! Avoid contact by all modes of exposure.**RELATED PRODUCTS:**Chlorpropamide (**Cat. No. B2105-100, 500**)Dipeptidylpeptidase IV, Human Plasma (**Cat. No. 4709-10**)Dipeptidylpeptidase IV, Human Recombinant (**Cat. No. 4710-10, 50, 1000**)Dipeptidylpeptidase IV Inhibitor, K 579 (**Cat. No. 1963-1, 5**)Dipeptidylpeptidase IV Inhibitor, NVP DPP 728 (**Cat. No. 1964-1, 5**)Diprotin A (**Cat. No. 2191-5, 25**)Diprotin B (**Cat. No. 2192-5, 25**)DiscoveryPak™ DPP-4 Inhibitors Set (**K890-5**)DPP4 Activity Assay Kit (**Cat. No. K779-100**)DPP4 Inhibitor Screening Kit (**Cat. No. K780-100**)Linagliptin (**Cat. No. 2240-50, 250**)MK-3102 (**Cat. No. 9599-1,5**)Sitagliptin Phosphate Monohydrate (**Cat. No. 1757-100, 1G**)Stevioside hydrate (**Cat. No. B1242-5,25**)Vlidagliptin (**Cat. No. 2188-10, 50**)**USAGE:** **FOR RESEARCH USE ONLY! Not to be used in humans**