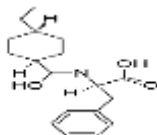


PRODUCT: Nateglinide**ALTERNATE NAMES:** *N*[[4-(1-Methylethyl)cyclohexyl]carbonyl]-D-phenylalanine**CATALOG NUMBER:** B2109-10, 50**AMOUNT:** 10 mg, 50 mg**STRUCTURE:****MOLECULAR FORMULA:** C₁₉H₂₇NO₃**MOLECULAR WEIGHT:** 317.42**CAS NUMBER:** 105816-04-4**APPEARANCE:** White solid**SOLUBILITY:** DMSO (~30 mg/ml)**PURITY:** ≥98% by HPLC**STORAGE:** Store at -20 °C. Protect from air and light**DESCRIPTION:** Nateglinide is an oral antihyperglycemic agent used for the treatment of non-insulin-dependent diabetes mellitus (NIDDM). It belongs to the meglitinide class of short-acting insulin secretagogues, which act by binding to β cells of the pancreas to stimulate insulin release. Used to treat type 2 diabetes mellitus.**REFERENCE:** Tostes, G.C., et al. (2016). *Diabetol. Metab. Syndr.* **8**, 1**HANDLING:** Do not take internally. Wear gloves and mask when handling the product! Avoid contact by all modes of exposure.**RELATED PRODUCTS:**Chlorpropamide (**Cat. No. B2105-100, 500**)Dipeptidylpeptidase IV, Human Plasma (**Cat. No. 4709-10**)Dipeptidylpeptidase IV, Human Recombinant (**Cat. No. 4710-10, 50, 1000**)Dipeptidylpeptidase IV Inhibitor, K 579 (**Cat. No. 1963-1, 5**)Dipeptidylpeptidase IV Inhibitor, NVP DPP 728 (**Cat. No. 1964-1, 5**)Diprotin A (**Cat. No. 2191-5, 25**)Diprotin B (**Cat. No. 2192-5, 25**)DiscoveryPak™ DPP-4 Inhibitors Set (**K890-5**)DPP4 Activity Assay Kit (**Cat. No. K779-100**)DPP4 Inhibitor Screening Kit (**Cat. No. K780-100**)Extedin-4 (acetate) (**Cat. No. B2106-1,5**)Glimepiride (**Cat. No. B2107-100,500**)Linagliptin (**Cat. No. 2240-50, 250**)Mitiglinide calcium (**Cat. No. B2108-10, 50**)MK-3102 (**Cat. No. 9599-1,5**)Nateglinide (**Cat. No. B2109-10, 50**)Sitagliptin Phosphate Monohydrate (**Cat. No. 1757-100, 1G**)Stevioside hydrate (**Cat. No. B1242-5,25**)Vlidagliptin (**Cat. No. 2188-10, 50**)**USAGE:** **FOR RESEARCH USE ONLY! Not to be used in humans**