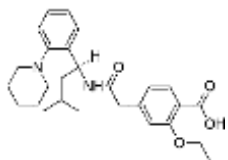


PRODUCT: Repaglinide**ALTERNATE NAMES:** 2-Ethoxy-4-[2-[[[(1S)-3-methyl-1-[2-(1-piperidinyl)phenyl]butyl]amino]-2-oxoethyl]benzoic acid**CATALOG NUMBER:** B2110-10, 50**AMOUNT:** 10 mg, 50 mg**STRUCTURE:****MOLECULAR FORMULA:** $C_{27}H_{36}N_2O_4$ **MOLECULAR WEIGHT:** 452.59**CAS NUMBER:** 135062-02-1**APPEARANCE:** White solid**SOLUBILITY:** DMSO (>35 mg/ml)**PURITY:** $\geq 98\%$ by HPLC**STORAGE:** Store at $-20\text{ }^{\circ}\text{C}$. Protect from air and light**DESCRIPTION:** Repaglinide is an antihyperglycemic agent used for the treatment of non-insulin-dependent diabetes mellitus (NIDDM). It belongs to the meglitinide class of short-acting insulin secretagogues, which act by binding to β cells of the pancreas to stimulate insulin release.**REFERENCE:** Coghlan, M.J., *et al.* (2001). *J. Med. Chem.* **44**, 1627-1653.**HANDLING:** Do not take internally. Wear gloves and mask when handling the product! Avoid contact by all modes of exposure.**RELATED PRODUCTS:**

Chlorpropamide (**Cat. No. B2105-100, 500**)
Dipeptidylpeptidase IV, Human Plasma (**Cat. No. 4709-10**)
Dipeptidylpeptidase IV, Human Recombinant (**Cat. No. 4710-10, 50, 1000**)
Dipeptidylpeptidase IV Inhibitor, K 579 (**Cat. No. 1963-1, 5**)
Dipeptidylpeptidase IV Inhibitor, NVP DPP 728 (**Cat. No. 1964-1, 5**)
Diprotin A (**Cat. No. 2191-5, 25**)
Diprotin B (**Cat. No. 2192-5, 25**)
DiscoveryPak™ DPP-4 Inhibitors Set (**K890-5**)
DPP4 Activity Assay Kit (**Cat. No. K779-100**)
DPP4 Inhibitor Screening Kit (**Cat. No. K780-100**)
Extedin-4 (acetate) (**Cat. No. B2106-1,5**)
Glimepiride (**Cat. No. B2107-100,500**)
Linagliptin (**Cat. No. 2240-50, 250**)
Mitiglinide calcium (**Cat. No. B2108-10, 50**)
MK-3102 (**Cat. No. 9599-1,5**)
Nateglinide (**Cat. No. B2109-10, 50**)
Repaglinide (**Cat. No. B2110-10, 50**)
Sitagliptin Phosphate Monohydrate (**Cat. No. 1757-100, 1G**)
Stevioside hydrate (**Cat. No. B1242-5,25**)
Vlidagliptin (**Cat. No. 2188-10, 50**)

USAGE: **FOR RESEARCH USE ONLY! Not to be used in humans**