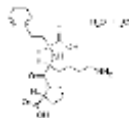


**PRODUCT: Lisinopril dihydrate****ALTERNATE NAMES:** (S)-1-[N2-(1-carboxy-3-phenylpropyl)-lysyl-proline dihydrate, Lisinopril, MK-521**CATALOG NUMBER:** B2132-50, 250**AMOUNT:** 50 mg, 250 mg**STRUCTURE:****MOLECULAR FORMULA:**  $C_{21}H_{31}O_5N_3 \cdot 2H_2O$ **MOLECULAR WEIGHT:** 441.52**CAS NUMBER:** 83915-83-7**APPEARANCE:** White solid**SOLUBILITY:** H<sub>2</sub>O (~10 mg/ml) or DMSO (~ 5 mg/ml)**PURITY:** ≥98% by HPLC**STORAGE:** Store at -20 °C. Protect from air and moisture**DESCRIPTION:** Lisinopril is a potent angiotensin converting-Enzyme (ACE) inhibitor (IC<sub>50</sub> = 4.7 nM). The administration of lisinopril can lower the diastolic and systolic blood pressure and higher the heart rate. Lisinopril is found to reduce the activity of plasma angiotensin converting enzyme markedly. It increases the level of plasma rennin while decreases the levels of plasma Angiotensin II and aldosterone.**REFERENCE:** Brunner, D.B., *et al.* (1981). *Br. J. Clin. Pharmacol.* **11**, 461-467.**HANDLING:** Do not take internally. Wear gloves and mask when handling the product! Avoid contact by all modes of exposure.**RELATED PRODUCTS:**  
ACE Inhibitor, DX600 (**9687**)  
Captopril (**B1187**)  
Elanapril maleate (**B2131**)  
Lisinopril dihydrate (**B2132**)**USAGE:** **FOR RESEARCH USE ONLY! Not to be used in humans**