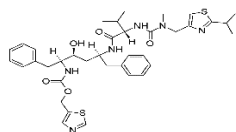


PRODUCT: Ritonavir

ALTERNATE NAMES: (3S,4S,6S,9S)-4-hydroxy-12-methyl-9-(1-methylethyl)-13-[2-(1-methylethyl)-4-thiazolyl]-8,11-dioxo-3,6-bis(phenylmethyl)-2,7,10,12-tetraazatridecanoic acid, 5-thiazolylmethyl ester; ABT-538; NSC 693184

CATALOG NUMBER: B2140-10, 50

AMOUNT: 10 mg, 50 mg

STRUCTURE:

MOLECULAR FORMULA: C₃₇H₄₈N₆O₅S₂

MOLECULAR WEIGHT: 720.94

CAS NUMBER: 155213-67-5

APPEARANCE: White solid

SOLUBILITY: DMSO (>10 mg/ml with slight warming)

PURITY: ≥98% by HPLC

STORAGE: Store at -20 °C. Protect from air and light

DESCRIPTION: Ritonavir is an orally bioavailable HIV-1 and HIV-2 protease inhibitor (EC₅₀ values are 0.022-0.13 and 0.16 μM, respectively). Through CYP3A4 inhibition, low doses of ritonavir can reduce the metabolism of concomitantly administered protease inhibitors, enhancing their bioavailability and efficacy. Ritonavir is an antiretroviral protease inhibitor that weakly inhibits several coronaviruses *in vitro*.

REFERENCE: Kempf, D.J., *et al.* (1998). *J. Med. Chem.* **41**, 602-617.

HANDLING: Do not take internally. Wear gloves and mask when handling the product! Avoid contact by all modes of exposure.

RELATED PRODUCTS:

Acyclovir (**Cat. No. 2200-50, 250**)
 5-Azacytidine (**Cat. No. 1854-50, 250**)
 6-Azauridine (**Cat. No. B1024-100, 500**)
 (-)-6-Azauridine 2', 3', 5'-triacetate (**Cat. No. B1025-50, 250**)
 Azidothymidine (**Cat. No. B1113-10, 50**)
 BMS-626529 (**Cat. No. B1557-5,25**)
 Clemizole (**Cat. No. 2481-10,50**)
 GSK1349572 (**Cat. No. 2288-5, 25**)
 Oseltamivir Phosphate (**Cat. No. B1885-50,250**)
 Oseltamivir Acid (**Cat. No. B1886-1,5**)
 Ribavirin (**Cat. No. 2199-10, 50**)
 Ritonavir (**Cat. No. B2140-10,50**)
 Saquinavir mesylate (**Cat. No. B1999-10,50**)
 Simeprevir (**Cat. No. B1173-5,25**)
 T-705 (Favipiravir) (**Cat. No. 2778-5,25**)
 Troviridine (**Cat. No. B1212-10, 50**)
 Valacyclovir hydrochloride (**Cat. No. 2201-10, 50**)
 Velpatasvir (**Cat. No. B1194-5,25**)

USAGE: **FOR RESEARCH USE ONLY! Not to be used in humans**