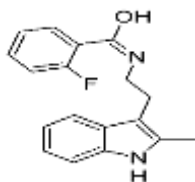


PRODUCT: CK-666**ALTERNATE NAMES:** 2-Fluoro-*N*-[2-(2-methyl-1*H*-indol-3-yl)ethyl]benzamide**CATALOG NUMBER:** B2147-5,25**AMOUNT:** 5 mg, 25 mg**STRUCTURE:****MOLECULAR FORMULA:** C₁₈H₁₇FN₂O**MOLECULAR WEIGHT:** 296.3**CAS NUMBER:** 442633-00-3**APPEARANCE:** Cream colored powder**SOLUBILITY:** DMSO (45 mg/ml) or EtOH (30 mg/ml)**PURITY:** ≥98% by TLC**STORAGE:** Store at -20 °C. Protect from air and light

DESCRIPTION: CK-666 is a potent, selective and reversible inhibitor of ARP2/3 complex (actin related proteins 2 and 3) with an IC₅₀ = 4 μM for human ARP2/3. Blocks actin nucleation and radically alters lamellipodial actin architecture, suspended cell shape and the cell spreading process. CK-666 attenuates BBB dysfunction induced by methamphetamine. A key new tool for studying actin assembly and the diverse range of actin-related processes in normal and pathophysiology.

REFERENCE: Nolen, B.J., et al. (2009). Nature 460, 1031-1034.**HANDLING:** Do not take internally. Wear gloves and mask when handling the product! Avoid contact by all modes of exposure.**RELATED PRODUCTS:**β-Actin Monoclonal Antibody (**Cat. No. 3598-100**)β-Actin Polyclonal Antibody (**Cat. No. 3850-100**)β-Actin Polyclonal Antibody (**Cat. No. 3662-100**)β-Actin Blocking Peptide (**Cat. No. 3850BP-50**)β-Actin Blocking Peptide (**Cat. No. 3662BP-50**)Jasplakinolide (**Cat. No. 1689-50**)Curcubatin E (**Cat. No. B1592-1,5**)Paclitaxel (**Cat. No. 1567-25**)**USAGE:** **FOR RESEARCH USE ONLY! Not to be used in humans**