

PRODUCT:

Dexpramipexole dihydrochloride

ALTERNATE NAME:

(R)-N6-propyl-4,5,6,7-tetrahydrobenzo[d]thiazole-2,6-diamine dihydrochloride; (R)-Pramipexole dihydrochloride

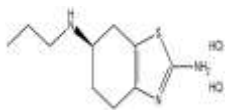
CATALOG #:

B2215-5,25

AMOUNT:

5 mg, 25 mg

STRUCTURE:



MOLECULAR FORMULA:

C₁₀H₁₇N₃S·2HCl

MOLECULAR WEIGHT:

284.2

CAS NUMBER:

104632-27-1

APPEARANCE:

White to off-white solid

SOLUBILITY:

H₂O (>15 mg/ml)

PURITY:

≥98% by HPLC

STORAGE:

Store at -20 °C. Protect from light and light

DESCRIPTION:

Dexpramipexole dihydrochloride is a neuroprotectant that may slow the progression of ALS by keeping the power on in deteriorating motor nerves. Dexpramipexole maintains mitochondrial function in people with ALS by increasing the efficiency of ATP production.

REFERENCES:

Cudkowicz, M., *et al.* (2011). *Nat. Med.* **17**, 1652-1656.

HANDLING:

Do not take internally. Wear gloves and mask when handling the product! Avoid contact by all modes of exposure.

08/18

RELATED PRODUCTS:

Aftin-4 (Cat. No. 2574-1, 5)

APP Antibody (Cat. No. 6001-100)

Beta-Secretase, human recombinant (Cat. No. 7604-20, 100, 1000)

Beta-Secretase Activity Assay Kit (Cat. No. K360-100)

Beta Secretase Inhibitor I (Cat. No. 7501-1)

Beta Secretase Inhibitor II (Cat. No. 7502-1)

Compound 34 (Cat. No. 1898-200, 1000)

Compound E (Cat. No. 1949-250, 1000)

Compound W (Cat. No. 2208-50, 250)

DAPT (Cat. No. 1855-5)

Dexpramipexole dihydrochloride (Cat. No. B2215-5,25)

L-685, 258 (Cat. No. 1713-250)

LY2886721 (Cat. No. 2399-5, 25)

RO4929097 (Cat. No. 2011-1, 5)

Semagacestat (Cat. No. 2430-1, 5)

TACE Antibody (Cat. No. 3222-100)

USAGE:

FOR RESEARCH USE ONLY! Not to be used in humans