

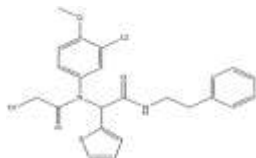
PRODUCT: **ML-162**

ALTERNATE NAME: α -[(2-chloroacetyl)(3-chloro-4-methoxyphenyl)amino]-N-(2-phenylethyl)-2-thiopheneacetamide

CATALOG #: B2304-1,5

AMOUNT: 1 mg, 5 mg

STRUCTURE:



MOLECULAR FORMULA: C₂₃H₂₂Cl₂N₂O₃S

MOLECULAR WEIGHT: 477.40

CAS NUMBER: 1035072-16-2

APPEARANCE: Crystalline solid

SOLUBILITY: DMSO (>20 mg/ml)

PURITY: ≥98% by HPLC

STORAGE: Store at -20°C. Protect from air and light

DESCRIPTION: ML-162 is a GPX4 (glutathione peroxidase 4) inhibitor that is selectively lethal to mutant RAS oncogene-expressing cell lines (IC₅₀s = 25 and 578 nM for HRAS^{G12V}-expressing and wild-type BJ fibroblasts, respectively).

REFERENCES: Cao, J.Y., and Dixon, S.J. (2016)., *Cell Mol. Life Sci.* **73**, 2195-2209.

HANDLING: Do not take internally. Wear gloves and mask when handling the product! Avoid contact by all modes of exposure.

RELATED PRODUCTS:

Erastin (**2231**)

EZSolution™ Erastin (**B1502**)

Ferostatin-1 (**2230**)

Glutathione Peroxidase Colorimetric Assay Kit (**K762**)

ML-162 (**B2304**)

RSL3 (**B2303**)

USAGE: **FOR RESEARCH USE ONLY! Not to be used in humans**