

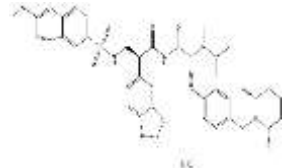
# SSR-240612

**ALTERNATE NAME:** (3R)-3-(1,3-benzodioxol-5-yl)-N-[(6-methoxy-2-naphthalenyl)sulfonyl]-β-alanyl-4-[[[(2R,6S)-2,6-dimethyl-1-piperidinyl]methyl]-N-methyl-N-(1-methylethyl)-D-phenylalaninamide, monohydrochloride

**CATALOG #:** B2349-5  
B2349-1

**AMOUNT:** 5 mg  
1 mg

**STRUCTURE:**



**MOLECULAR FORMULA:** C<sub>42</sub> H<sub>52</sub> N<sub>4</sub> O<sub>7</sub> S • HCl

**MOLECULAR WEIGHT:** 793.4

**CAS NUMBER:** 464930-42-5

**APPEARANCE:** Crystalline solid

**PURITY:** ≥98% by HPLC

**SOLUBILITY:** >25 mg/ml (DMSO)

**REFERENCES:** Gougat, J., et al. (2004). J. Pharmacol. Exp. Ther. 30, 661-669.

**DESCRIPTION:** SSR-240612 is a potent and selective, non-peptide antagonist of the bradykinin B1 receptor (K<sub>i</sub> = 0.48-0.73 and 358-481 nM for B1 and B2 receptors, respectively). It inhibits the contraction of rabbit aorta and rat ileum induced by the B1 receptor agonist des-Arg<sup>9</sup>-bradykinin (des-Arg<sup>9</sup>-BK) ex vivo in a concentration-dependent manner.

**HANDLING:** Do not take internally. Wear gloves and mask when handling the product! Avoid contact by all modes of exposure.

**RELATED PRODUCTS:**

Kininogen, LMW, Human Plasma (7301)  
Kininogen, HMW, Human Plasma (7300)  
Kallekrein, Human Plasma (4093)

**DISCLAIMER:** ***FOR RESEARCH USE ONLY! Not to be used on humans.***