

Cyclo (RGDfK)

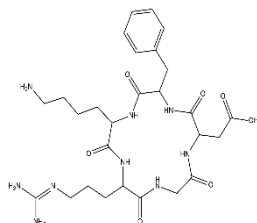
01/19

ALTERNATE NAME: cyclo[Arg-Gly-Asp-D-Phe-Lys]
 2-[(2S,5R,8S,11S)-8-(4-aminobutyl)-5-benzyl-11-[3-(diaminomethylideneamino)propyl]-3,6,9,12,15-pentaoxo-1,4,7,10,13-pentazacyclopentadec-2-yl]acetic acid

CATALOG #: B2363-5
 B2363-25

AMOUNT: 5 mg
 25 mg

STRUCTURE:



MOLECULAR FORMULA: C₂₇H₄₁N₉O₇

MOLECULAR WEIGHT: 603.68

CAS NUMBER: 161552-03-0

Storage Temperature: -20°C

APPEARANCE: Off-white solid

PURITY: ≥98% by HPLC

SOLUBILITY: >30 mg/ml (DMSO)
 >50 mg/ml (H₂O)

REFERENCES: Sancey, L., et al. (2009). Mol. Ther. 17, 837-843

DESCRIPTION: Cyclo(-RGDfK) is a potent and selective inhibitor of the αvβ3 integrin (IC₅₀ = 0.94 nM)

HANDLING: Do not take internally. Wear gloves and mask when handling the product! Avoid contact by all modes of exposure.

RELATED PRODUCTS:

CWHM-12 (B1251)
 Integrin Ligand Peptide (1824)
 Leukadherin-1 (2059)

DISCLAIMER: *FOR RESEARCH USE ONLY! Not to be used on humans.*