

# Cilengitide

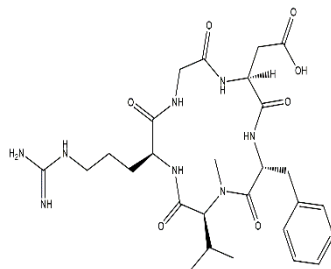
11/19

**ALTERNATE NAME:** EMD-121974  
cyclo(L-arginylglycyl-L- $\alpha$ -aspartyl-D-phenylalanyl-N-methyl-L-valyl)

**CATALOG #:** B2365-5  
B2365-25

**AMOUNT:** 5 mg  
25 mg

**STRUCTURE:**



**MOLECULAR FORMULA:** C<sub>27</sub>H<sub>40</sub>N<sub>8</sub>O<sub>7</sub>

**MOLECULAR WEIGHT:** 588.7

**CAS NUMBER:** 188968-51-6

**Storage:** -20°C

**APPEARANCE:** Crystalline solid

**PURITY:**  $\geq$ 98%

**SOLUBILITY:** >20 mg/ml (DMSO)

**REFERENCES:** Yamada, S., et al. (2006). Neurosurgery 59, 1304-1312

**DESCRIPTION:** Cilengitide is a cyclo-(Arg-Gly-Asp-D-Phe-Val) (cRGDFV) peptide that acts as an integrin  $\alpha$ V $\beta$ 3 receptor antagonist. It inhibits adhesion and induces apoptosis of U87MG and U373MG malignant glioma (MG) cells, but not U251MG cells that lack the integrin  $\alpha$ V $\beta$ 3 receptor, in vitro at a concentration of 20  $\mu$ g/ml.

**HANDLING:** Do not take internally. Wear gloves and mask when handling the product! Avoid contact by all modes of exposure.

**RELATED PRODUCTS:**

Cyclo (RGDfK) (B2363)  
CWHM-12 (B1251)

**DISCLAIMER:** *FOR RESEARCH USE ONLY! Not to be used on humans.*