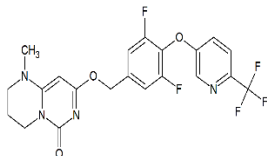


# GSK-2814338

**ALTERNATE NAME:** GSK2814338  
Lp-PLA2 -IN-1  
8-((3,5-difluoro-4-((6-(trifluoromethyl)pyridin-3-yl)oxy)benzyl)oxy)-1-methyl-1,2,3,4-tetrahydro-6H-pyrimido[1,6-a]pyrimidin-6-one

**CATALOG #:** B2426-5 5 mg  
B2426-25 25 mg

**STRUCTURE:**



**MOLECULAR FORMULA:** C<sub>21</sub>H<sub>17</sub>F<sub>5</sub>N<sub>4</sub>O<sub>3</sub>

**MOLECULAR WEIGHT:** 468.38

**CAS NUMBER:** 1420367-28-7

**APPEARANCE:** Crystalline solid

**PURITY:** ≥98% by HPLC

**SOLUBILITY:** DMSO

**STORAGE CONDITIONS:** -20°C

**DESCRIPTION:** GSK-2814338 is a potent Lp-PLA2 inhibitor useful for the treatment of atherosclerosis and Alzheimer's disease

**REFERENCES:**

**HANDLING:** Do not take internally. Wear gloves and mask when handling the product! Avoid contact by all modes of exposure.

**RELATED PRODUCTS:**

Darapladib (B1265)  
FIPI hydrochloride (9593)  
FIPI (free base) (B2372)  
LY315920 (2666)

**DISCLAIMER:** *FOR RESEARCH USE ONLY! Not to be used on humans.*