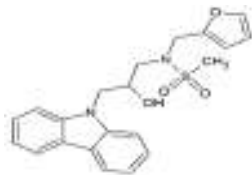


KL001

ALTERNATE NAME: N-[3-(9H-carbazol-9-yl)-2-hydroxypropyl]-N-(2-furanylmethyl)-methanesulfonamide

CATALOG #: B2449-5 5 mg
B2449-25 25 mg

STRUCTURE:



MOLECULAR FORMULA: C₂₁H₂₂N₂O₄S

MOLECULAR WEIGHT: 398.48

CAS NUMBER: 309928-48-1

APPEARANCE: White solid

PURITY: ≥98% by HPLC

SOLUBILITY: >30 mg/ml DMSO

DESCRIPTION: KL001 is a cryptochrome protein (CRY) stabilizer. It blocks ubiquitin-dependent degradation of CRY, resulting in lengthening of the circadian period. Represses glucagon-induced hepatic gluconeogenesis through the induction of Pck1 and G6pc expression.

REFERENCES: Hirota, T., et al. (2012). Science 337, 1094-1097.

HANDLING: Do not take internally. Wear gloves and mask when handling the product! Avoid contact by all modes of exposure.

RELATED PRODUCTS:

GSK-4112 (9663)

DISCLAIMER: *FOR RESEARCH USE ONLY! Not to be used on humans.*