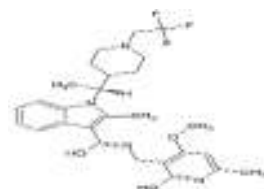


CPI-1205

ALTERNATE NAME: CPI1205
N-[(4-methoxy-6-methyl-2-oxo-1H-pyridin-3-yl)methyl]-2-methyl-1-[(1R)-1-[1-(2,2,2-trifluoroethyl)piperidin-4-yl]ethyl]indole-3-carboxamide

CATALOG #: B2509-1 1 mg
B2509-5 5 mg

STRUCTURE:



MOLECULAR FORMULA: C₂₇H₃₃F₃N₄O₃

MOLECULAR WEIGHT: 518.57

CAS NUMBER: 1621862-70-1

APPEARANCE: Crystalline solid

PURITY: ≥98% by HPLC

SOLUBILITY: >100 mg/ml DMSO

DESCRIPTION: CPI-1205 is a highly potent (biochemical IC₅₀ = 0.002 μM, cellular EC₅₀ = 0.032 μM) and selective inhibitor of the histone lysine methyltransferase EZH2 (biochemical IC₅₀ = 0.002 μM, cellular EC₅₀ = 0.032 μM). Upon oral administration, CPI-1205 selectively inhibits the activity of both wild-type and mutated forms of EZH2.

STORAGE TEMPERATURE: -20°C. Protect from light

HANDLING: Do not take internally. Wear gloves and mask when handling the product! Avoid contact by all modes of exposure.

RELATED PRODUCTS:

3-Deazaneplanocin A (2060)
EZH2 Inhibitor, EPZ005687 (2364)
3-Deazaneplanocin A hydrochloride (2444)
EZSolution™ 3-Deazaneplanocin A (2409)

DISCLAIMER: *FOR RESEARCH USE ONLY! Not to be used on humans.*