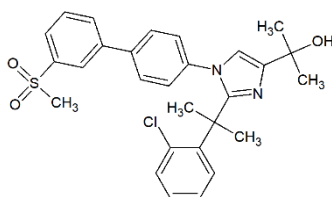


# BMS-779788

**ALTERNATE NAME:** EXEL04286652  
XL652  
BMS 779788  
2-(2-(2-(2-chlorophenyl)propan-2-yl)-1-(3'-(methylsulfonyl)-[1,1'-biphenyl]-4-yl)-1H-imidazol-4-yl)propan-2-ol  
XL-652  
EXEL-04286652  
BMS779788

**CATALOG #:** B2602-5 5 mg  
B2602-25 25 mg

**STRUCTURE:**



**MOLECULAR FORMULA:** C<sub>28</sub>H<sub>29</sub>ClN<sub>2</sub>O<sub>3</sub>S

**MOLECULAR WEIGHT:** 509.06

**CAS NUMBER:** 918348-67-1

**APPEARANCE:** White to off-white solid

**PURITY:** ≥98% by HPLC

**SOLUBILITY:** DMSO

**DESCRIPTION:** BMS-779788 is a LXR partial agonist with IC<sub>50</sub> values of 68 nM for LXRα and 14 nM for LXRβ. BMS-779788 induces LXR target genes in blood in vivo with an EC<sub>50</sub> = 610 nM, a value similar to its in vitro blood gene induction potency.

**STORAGE TEMPERATURE:** -20°C. Protect from light

**HANDLING:** Do not take internally. Wear gloves and mask when handling the product! Avoid contact by all modes of exposure.

**RELATED PRODUCTS:**

T0901317 (B1636)  
LXR-623 (B2454)  
SR9243 (9642)  
GW-3965 hydrochloride (9402)

**DISCLAIMER:** *FOR RESEARCH USE ONLY! Not to be used on humans.*