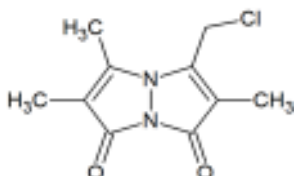


# Monochlorobimane

**ALTERNATE NAME:** Chlorobimane  
NSC602733  
7-(chloromethyl)-1,2,6-trimethylpyrazolo[1,2-a]pyrazole-3,5-dione  
NSC-602733

**CATALOG #:** B2671-5 5 mg  
B2671-25 25 mg

**STRUCTURE:**



**MOLECULAR FORMULA:** C<sub>10</sub>H<sub>11</sub>ClN<sub>2</sub>O<sub>2</sub>

**MOLECULAR WEIGHT:** 226.66

**CAS NUMBER:** 76421-73-3

**APPEARANCE:** Yellow solid

**PURITY:** ≥98% by HPLC

**SOLUBILITY:** DMSO

**DESCRIPTION:** Monochlorobimane is a cell-permeant probe for quantifying glutathione levels in cells. It is essentially nonfluorescent until it reacts with a thiol group. It readily reacts with several low molecular weight thiols, including cysteine, glutathione, N-acetylcysteine, mercaptopurine, peptides and plasma thiols. The glutathione conjugate of monochlorobimane has an excitation/emission maxima at ~394/490 nm.

**STORAGE TEMPERATURE:** -20°C. Protect from light

**HANDLING:** Do not take internally. Wear gloves and mask when handling the product! Avoid contact by all modes of exposure.

**RELATED PRODUCTS:**

Glutathione (GSH/GSSG/Total) Fluorometric Assay Kit (K264)  
Reduced Glutathione (GSH) Assay Kit (Colorimetric) (K464)  
Glutathione Colorimetric Assay Kit (K261)  
Glutathione Fluorometric Assay Kit (K251)

**DISCLAIMER:** *FOR RESEARCH USE ONLY! Not to be used on humans.*