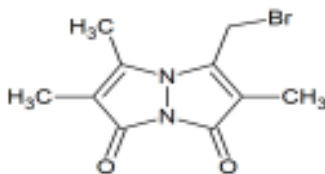


# Monobromobimane

**ALTERNATE NAME:** Bromobimane  
NSC-608544  
mBBr  
NSC 608544  
Bimane monobromide

**CATALOG #:** B2672-5 5 mg  
B2672-25 25 mg

**STRUCTURE:**



**MOLECULAR FORMULA:** C<sub>10</sub>H<sub>11</sub>BrN<sub>2</sub>O<sub>2</sub>

**MOLECULAR WEIGHT:** 271.11

**CAS NUMBER:** 71418-44-5

**APPEARANCE:** Light yellow solid

**PURITY:** ≥98%

**SOLUBILITY:** ~50 mg/ml DMSO

**DESCRIPTION:** Monobromobimane (mBBr) is a cell-permeable, thiol-reactive fluorescent probe that is widely used to detect various thiol-containing biomolecules such as glutathione in cells. It reacts rapidly at physiological pH with available thiol groups, and generates a stable fluorescent signal. Monobromobimane can be used to evaluate or quantify a variety of compounds containing reactive sulfur or thiol groups, including H<sub>2</sub>S, glutathione, proteins, and nucleotides. The excitation and emission maxima for monobromobimane are 398 and 490 nm, respectively.

**STORAGE TEMPERATURE:** -20°C. Protect from light

**HANDLING:** Do not take internally. Wear gloves and mask when handling the product! Avoid contact by all modes of exposure.

**RELATED PRODUCTS:**

Monochlorobimane (B2671)  
Glutathione Colorimetric Assay Kit (K261)  
Glutathione (GSH/GSSG/Total) Fluorometric Assay Kit (K264)  
Glutathione Fluorometric Assay Kit (K251)

**DISCLAIMER:** *FOR RESEARCH USE ONLY! Not to be used on humans.*