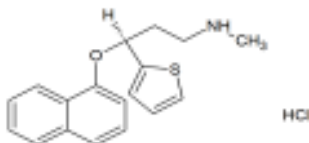


(S)-Duloxetine hydrochloride

ALTERNATE NAME: (S)-N-Methyl-3-(naphthalen-1-yloxy)-3-(thiophen-2-yl)propan-1-amine hydrochloride
Duloxetine HCl
Cymbalta

CATALOG #: B2680-50 50 mg
B2680-250 250 mg

STRUCTURE:



MOLECULAR FORMULA: C₁₈H₁₉NOS • HCl

MOLECULAR WEIGHT: 333.88

CAS NUMBER: 136434-34-9

APPEARANCE: White to off-white solid

PURITY: ≥97% by HPLC

SOLUBILITY: ~ 25 mg/ml DMSO

DESCRIPTION: (S)-Duloxetine hydrochloride belongs to the class of serotonin and norepinephrine reuptake inhibitors. (S)-Duloxetine suppresses spontaneous firing activity in vivo in the dorsal raphe and locus coeruleus (ED50s = 99 and 475 µg/kg, respectively). It is used to treat stress urinary incontinence, psychiatric and metabolic disorders. It is also used for treating diabetic peripheral neuropathic pain, fibromyalgia, chronic musculoskeletal and low back pain (LBP).

STORAGE TEMPERATURE: -20°C. Protect from moisture

HANDLING: Do not take internally. Wear gloves and mask when handling the product! Avoid contact by all modes of exposure.

RELATED PRODUCTS:

Sertraline (hydrochloride) (B2393)
Serotonin ELISA Kit (E4294)
Pimavanserin Tartrate (B1915)
Eltoprazine hydrochloride (B2301)

DISCLAIMER: *FOR RESEARCH USE ONLY! Not to be used on humans.*