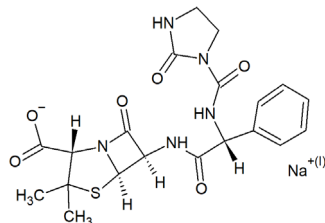


Azlocillin sodium

ALTERNATE NAME: (2S,5R,6R)-3,3-dimethyl-7-oxo-6-[[[(2R)-2-[[[(2-oxo-1-imidazolidinyl)carbonyl]amino]-2-phenylacetyl]amino]-4-thia-1-azabicyclo[3.2.0]heptane-2-carboxylic acid, monosodium salt

CATALOG #: B2700-100 100 mg
B2700-500 500 mg

STRUCTURE:



MOLECULAR FORMULA: $C_{20}H_{22}N_5O_6S \cdot Na$

MOLECULAR WEIGHT: 483.47

CAS NUMBER: 37091-65-9

APPEARANCE: White to off-white solid

PURITY: $\geq 90\%$

SOLUBILITY: ~ 50 mg/ml Water

DESCRIPTION: Azlocillin sodium is an acylampicillin that exhibits an extended-spectrum of activity and in vitro potency that is greater than that of the carboxy penicillins. Azlocillin is shown to be effective against a broad spectrum of bacteria, including *Pseudomonas aeruginosa* and enterococci. By binding to specific penicillin-binding proteins (PBPs) located inside the bacterial cell wall, azlocillin inhibits the third and last stage of bacterial cell wall synthesis. Cell lysis is then mediated by bacterial cell wall autolytic enzymes such as autolysins.

STORAGE TEMPERATURE: -20°C. Protect from moisture

HANDLING: Do not take internally. Wear gloves and mask when handling the product! Avoid contact by all modes of exposure.

RELATED PRODUCTS:

Penicillin G sodium (2503)
Cloxacillin sodium (B2687)
Penicillin G potassium, USP (2504)
Ampicillin ELISA Kit (E4350)

DISCLAIMER: *FOR RESEARCH USE ONLY! Not to be used on humans.*