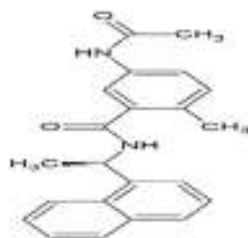


PLpro inhibitor

ALTERNATE NAME: KOM70144
(R)-5-acetamido-2-methyl-N-(1-(naphthalen-1-yl)ethyl)benzamide

CATALOG #: B2757-5 5 mg
B2757-25 25 mg

STRUCTURE:



MOLECULAR FORMULA: C₂₂H₂₂N₂O₂

MOLECULAR WEIGHT: 346.43

CAS NUMBER: 1093070-14-4

APPEARANCE: Crystalline solid

PURITY: ≥98%

SOLUBILITY: DMSO

DESCRIPTION: PLpro inhibitor is a potent inhibitor of papain-like protease (PLpro) (IC₅₀ = 2.6 μM). PLpro inhibitor inhibits SARS-CoV-2 PLpro with an IC₅₀ of 5.0 μM and an EC₅₀ of 21.0 μM.

STORAGE TEMPERATURE: -20°C. Protect from light

HANDLING: Do not take internally. Wear gloves and mask when handling the product! Avoid contact by all modes of exposure.

RELATED PRODUCTS:

Leupeptin, hemisulfate (Microbial) (1648)
Antipain dihydrochloride (2834)
Recombinant SARS-CoV-2 Papain-like Protease (P1551)

DISCLAIMER: *FOR RESEARCH USE ONLY! Not to be used on humans.*