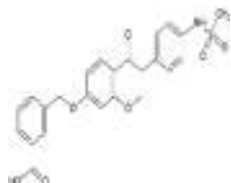


# CVT-10216

**ALTERNATE NAME:** 3-[[[3-[4-[(Methylsulfonyl)amino]phenyl]-4-oxo-4H-1-benzopyran-7-yl]oxy]methyl]benzoic acid  
CVT10216  
GS-455534

**CATALOG #:** B2765-1 1 mg  
B2765-5 5 mg

**STRUCTURE:**



**MOLECULAR FORMULA:** C<sub>24</sub>H<sub>19</sub>NO<sub>7</sub>S

**MOLECULAR WEIGHT:** 465.48

**CAS NUMBER:** 1005334-57-5

**APPEARANCE:** Off-white solid

**PURITY:** ≥98% by HPLC

**SOLUBILITY:** >40 mg/ml DMSO

**DESCRIPTION:** CVT-10216 is a potent, selective, and reversible inhibitor of aldehyde dehydrogenase 2 (ALDH2) (IC<sub>50</sub> values are 29 and 1300 nM for ALDH2 and ALDH1, respectively). CVT-10216 has been reported to reduce excessive alcohol drinking in alcohol-preferring rats and to prevent self-administration of alcohol in Long-Evans rats.

**STORAGE TEMPERATURE:** -20°C. Protect from light

**HANDLING:** Do not take internally. Wear gloves and mask when handling the product! Avoid contact by all modes of exposure.

**RELATED PRODUCTS:**

PicoProbe™ Aldehyde Dehydrogenase Activity Fluorometric Assay Kit (K741)  
Aldehyde Dehydrogenase 2 Inhibitor Screening Kit (Fluorometric) (K2011)  
Disulfiram (2308)  
Aldehyde Dehydrogenase Activity Colorimetric Assay Kit (K731)

**DISCLAIMER:** ***FOR RESEARCH USE ONLY! Not to be used on humans.***