

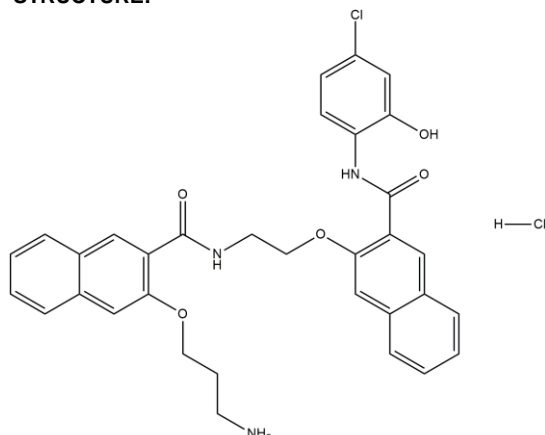
666-15

01/20

ALTERNATE NAMES: 3-(3-aminopropoxy)-N-[2-[3-[(4-chloro-2-hydroxyphenyl)carbamoyl]naphthalen-2-yl]oxyethyl]naphthalene-2-carboxamide, hydrochloride; 3-(3-Aminopropoxy)-N-(2-((3-((4-chloro-2-hydroxyphenyl)carbamoyl)naphthalen-2-yl)oxy)ethyl)-2-naphthamide hydrochloride; CREB 666-15; CREB Inhibitor; CBP-CREB Interaction Inhibitor II; Compound 3i

CATALOG #: B2970-1 1 mg
B2970-5 5 mg

STRUCTURE:



MOLECULAR FORMULA: C₃₃H₃₁Cl₂N₃O₅

MOLECULAR WEIGHT: 620.52

CAS NUMBER: 1433286-70-4

APPEARANCE: Solid

PURITY: 98.65%

SOLUBILITY: ~30 mg/ml in DMSO

DESCRIPTION: 666-15 is a potent and selective inhibitor of cyclic adenosine monophosphate response element binding protein (CREB)-mediated gene transcription with an IC₅₀ of 81 nM. The IC₅₀ values for inhibiting the growth of A549, MCF-7, MDA-MB-231, MDA-MB-468 cell lines are 0.47 μM, 0.31 μM, 0.073 μM, 0.046 μM respectively. It is a weak inhibitor of CREB-CBP (CREB-binding protein) interaction with an IC₅₀ of 18.27 μM. Intraperitoneal injection of 666-15 at 10 mg/kg/day, 5 days per week for 5 weeks suppresses tumor growth in an *in vivo* MDA-MB-468 xenograft model.

STORAGE TEMPERATURE: -20°C. Store in the dark. Product is light sensitive. Protect from air. Store under desiccating conditions.

HANDLING: Do not take internally. Wear gloves and mask when handling the product! Avoid contact by all modes of exposure.

REFERENCES: Xie, F., Li, B.X., Kassenbrock, A. et al. Identification of a Potent Inhibitor of CREB-Mediated Gene Transcription with Efficacious *In Vivo* Anticancer Activity. *J Med Chem.* 58(12):5075-87 (2015).

RELATED PRODUCTS:

CREB Blocking Peptide (Cat. No. 3360RBP)
 CREB Antibody (Cat. No. 3360R)
 KG-501 (Cat. No. B2380)
 CREB Binding Protein bromodomain (1081-1197 aa) (GST-tagged), Human recombinant (Cat. No. 7659)
 Phospho CREB (Ser129) Antibody (Cat. No. A1222)

DISCLAIMER: **FOR RESEARCH USE ONLY! Not to be used on humans.**