

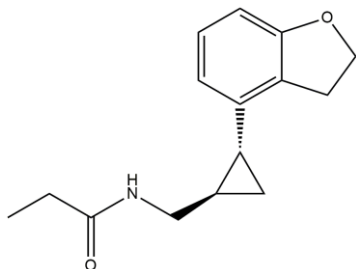
# Tasimelteon

02/20

**ALTERNATE NAMES:** N-[[[(1R,2R)-2-(2,3-dihydro-1-benzofuran-4-yl)cyclopropyl]methyl]propanamide; Hetlio; BMS 214778; VEC-162; MA 1; (1R-trans)-N-[[2-(2,3-Dihydro-4-benzofuranyl)cyclopropyl]methyl]propanamide

**CATALOG #:** B2985-5 5 mg  
B2985-25 25 mg

**STRUCTURE:**



**MOLECULAR FORMULA:** C<sub>15</sub>H<sub>19</sub>NO<sub>2</sub>

**MOLECULAR WEIGHT:** 245.32

**CAS NUMBER:** 609799-22-6

**APPEARANCE:** White to Off-White powder

**PURITY:** 95%

**SOLUBILITY:** ~2 mg/ml in DMSO

**DESCRIPTION:** Tasimelteon is a potent Dual Melatonin Receptor Agonist (DMRA). It is used to treat non-24-hour sleep-wake disorder. The K<sub>i</sub> values for binding affinity at melatonin receptors MT1 and MT2 receptor are 0.304 and 0.069 nM respectively in CHO-K1 cells. It shows greater affinity for the MT2 receptor which is believed to mediate circadian rhythm phase-shifting. It induces a potent, concentration-dependent inhibition of forskolin-stimulated cAMP accumulation in NIH-3T3 cells stably expressing human MT1 and MT2 receptors with EC<sub>50</sub> values of 0.74 nM and 0.1 nM respectively.

**STORAGE TEMPERATURE:** -20°C

**HANDLING:** Do not take internally. Wear gloves and mask when handling the product! Avoid contact by all modes of exposure.

**REFERENCE:** Lavedan, C., Forsberg, M., and Gentile, A.J. Tasimelteon: A selective and unique receptor binding profile. *Neuropharmacology* 91, 142-147 (2015).

**RELATED PRODUCTS:**

PF-670462 (Cat. No. B2271)  
 Melatonin ELISA Kit (Cat. No. E4630)  
 GSK-4112 (Cat. No. 9663)  
 Melatonin (Cat. No. 2488)  
 CLOCK Antibody (Cat. No. 3896)

**DISCLAIMER:** **FOR RESEARCH USE ONLY! Not to be used on humans.**