

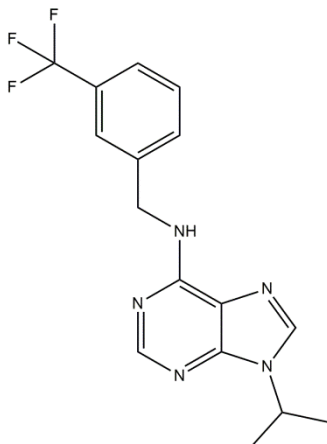
# Longdaysin

05/21

**ALTERNATE NAMES:** 9-propan-2-yl-N-[[3-(trifluoromethyl)phenyl]methyl]purin-6-amine; 9-isopropyl-N-(3-(trifluoromethyl)benzyl)-9H-purin-6-amine

**CATALOG #:** B3136-5 5 mg  
B3136-25 25 mg

**STRUCTURE:**



**MOLECULAR FORMULA:** C<sub>16</sub>H<sub>16</sub>F<sub>3</sub>N<sub>5</sub>

**MOLECULAR WEIGHT:** 335.33

**CAS NUMBER:** 1353867-91-0

**APPEARANCE:** White powder

**PURITY:** ≥ 98%

**SOLUBILITY:** ~15 mg/ml in DMSO

**DESCRIPTION:** Longdaysin is a potent modulator of circadian rhythm. It slows the circadian clock both in cultured mammalian cells and zebrafish. It inhibits the protein kinases CK1δ, CK1α, ERK2, and CDK7 activities with IC<sub>50</sub> values of 8.8 μM, 5.6 μM, 52 μM and 29 μM, respectively.

**STORAGE TEMPERATURE:** -20 °C. Store in the dark. Product is light sensitive.

**HANDLING:** Do not take internally. Wear gloves and mask when handling the product! Avoid contact by all modes of exposure.

**REFERENCE:** Hirota, T., Lee, J. W., Lewis, W.G. et al. High-throughput chemical screen identifies a novel potent modulator of cellular circadian rhythms and reveals CK1α as a clock regulatory kinase. *PLoS Biol.* 14;8(12):e1000559 (2010).

**RELATED PRODUCTS:**

PF-670462 (Cat. No. B2771)  
Tasimelteon (Cat. No. B2985)  
KL001 (Cat. No. B2449)  
YK-3-237 (Cat. No. B2762)  
Melatonin (Cat. No. B2488)

**DISCLAIMER:** **FOR RESEARCH USE ONLY! Not to be used on humans.**