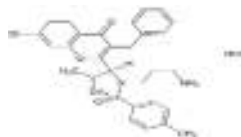


SB-743921 Hydrochloride

ALTERNATE NAME: N-(3-Aminopropyl)-N-[(1R)-1-[7-chloro-4-oxo-3-(phenylmethyl)-4H-1-benzopyran-2-yl]-2-methylpropyl]-4-methylbenzamide hydrochloride

CATALOG #: B3215-5 5 mg
B3215-25 25 mg

STRUCTURE:



MOLECULAR FORMULA: C₃₁H₃₃ClN₂O₃.HCl

MOLECULAR WEIGHT: 553.52

CAS NUMBER: 940929-33-9

APPEARANCE: Off-white solid

PURITY: ≥98% by HPLC

SOLUBILITY: >40 mg/ml DMSO

DESCRIPTION: SB-743921 hydrochloride is potent kinesin spindle protein (KSP) inhibitor (K_i = 0.1 nM). Displays almost no affinity to MKLP1, Kin2, Kif1A, Kif15, KHC, Kif4, and CENP-E. Induces cell mitotic arrest and apoptosis in vitro. Inhibits the growth of a range of tumor cells in vitro, including colon (HCT 116), prostate (PC-3) and leukemia (K-562) cancer cell lines.

STORAGE TEMPERATURE: -20°C. Protect from moisture

HANDLING: Do not take internally. Wear gloves and mask when handling the product! Avoid contact by all modes of exposure.

RELATED PRODUCTS:

SB-715992 (2468)
K858 (B1073)
Monastrol (B2269)

DISCLAIMER: *FOR RESEARCH USE ONLY! Not to be used on humans.*