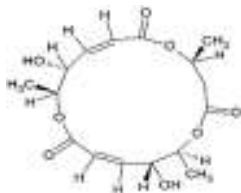


Macrosphelide A

ALTERNATE NAME: 9R,15R-dihydroxy-4S,10S,16S-trimethyl-1,5,11-trioxacyclohexadeca-7E,13E-diene-2,6,12-trione

CATALOG #: B3227-1 1 mg

STRUCTURE:



MOLECULAR FORMULA: C₁₆H₂₂O₈

MOLECULAR WEIGHT: 342.4

CAS NUMBER: 172923-77-2

APPEARANCE: Lyophilized solid

PURITY: ≥95%

SOLUBILITY: DMSO

DESCRIPTION: Macrosphelide A is a macrolide antibiotic. It inhibits adhesion of HL-60 human leukemia cells to human umbilical vein endothelial cells (HUVECs) in a concentration-dependent manner. It inhibits the growth of some ascomycetes, basidiomycetes, oomycetes and gram-positive bacteria, including the medically important *Staphylococcus aureus* (IC₅₀ of ≤500 µg/ml in agar-based tests). Ineffective against yeasts and gram-negative bacteria when tested at concentrations up to 700 µg/ml.

STORAGE TEMPERATURE: -20°C. Protect from light

HANDLING: Do not take internally. Wear gloves and mask when handling the product! Avoid contact by all modes of exposure.

RELATED PRODUCTS:

K-7174 dihydrochloride (9478)
CEP-37440 (B2504)
Ro 48-8071 fumarate (B1042)
Filastatin (B2767)

DISCLAIMER: *FOR RESEARCH USE ONLY! Not to be used on humans.*