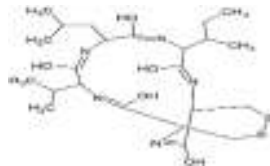


# Malformin A1

**ALTERNATE NAME:** cyclo(D-cysteinyl-D-cysteinyl-L-valyl-D-leucyl-L-isoleucyl), cyclic (1→2)-disulfide

**CATALOG #:** B3228-1000 1 mg  
B3228-250 250 µg

**STRUCTURE:**



**MOLECULAR FORMULA:** C<sub>23</sub>H<sub>39</sub>N<sub>5</sub>O<sub>5</sub>S<sub>2</sub>

**MOLECULAR WEIGHT:** 529.7

**CAS NUMBER:** 3022-92-2

**APPEARANCE:** Solid

**PURITY:** ≥95%

**SOLUBILITY:** ~1 mg/ml DMSO

**DESCRIPTION:** Malformin A is a cyclopentapeptide fungal metabolite that displays diverse biological activities. It is a plant growth regulator that induces malformations in plant structure. Malformin A inhibits replication of tobacco mosaic virus (TMV) in local lesion and leaf-disc assays. It inhibits proliferation of PC3 and LNCaP cells (IC<sub>50</sub>s = 130 and 90 nM, respectively), and induces apoptosis and necrosis in PC3 and LNCaP cells.

**STORAGE TEMPERATURE:** -20°C. Protect from moisture

**HANDLING:** Do not take internally. Wear gloves and mask when handling the product! Avoid contact by all modes of exposure.

**RELATED PRODUCTS:**

(+)-Abscisic acid (2543)  
Gibberellic acid (B2234)  
Validamycin A (B1540)  
Aspterric acid (B2233)

**DISCLAIMER:** *FOR RESEARCH USE ONLY! Not to be used on humans.*