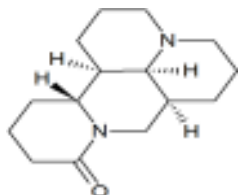


# Matrine

**ALTERNATE NAME:** (7aS,13aR,13bR,13cS)-dodecahydro-1H,5H,10H-dipyrido[2,1-f:3',2',1'-ij][1,6]naphthyridin-10-one  
Matridin-15-one  
Sophocarpidine

**CATALOG #:** B3236-10 10 mg  
B3236-50 50 mg

**STRUCTURE:**



**MOLECULAR FORMULA:** C<sub>15</sub>H<sub>24</sub>N<sub>2</sub>O

**MOLECULAR WEIGHT:** 248.37

**CAS NUMBER:** 519-02-8

**APPEARANCE:** White to off-white solid

**PURITY:** ≥98%

**SOLUBILITY:** ~10 mg/ml DMSO

**DESCRIPTION:** Matrine is a biologically active alkaloid isolated from the root of the saphoro plant. It inhibits LPS-induced splenocyte proliferation and release of IL-1 and IL-6 from mouse peritoneal macrophages in vitro. Matrine has been studied for possible antiviral efficacy against hepatitis B and C, as well as impact against some skin diseases and forms of cancer.

**STORAGE TEMPERATURE:** -20°C. Protect from light

**HANDLING:** Do not take internally. Wear gloves and mask when handling the product! Avoid contact by all modes of exposure.

**RELATED PRODUCTS:**

WS3 (2799)  
LY-3381916 (B2729)  
WS6 (2711)  
TAS-301 (9644)

**DISCLAIMER:** *FOR RESEARCH USE ONLY! Not to be used on humans.*