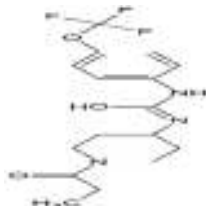


# TPPU

**ALTERNATE NAME:** 1-(4-Trifluoro-methoxy-phenyl)-3-(1-propionylpiperidin-4-yl)urea

**CATALOG #:** B3309-5 5 mg  
B3309-25 25 mg

**STRUCTURE:**



**MOLECULAR FORMULA:** C<sub>16</sub>H<sub>20</sub>F<sub>3</sub>N<sub>3</sub>O<sub>3</sub>

**MOLECULAR WEIGHT:** 359.34

**CAS NUMBER:** 1222780-33-7

**APPEARANCE:** Crystalline solid

**PURITY:** ≥98% by HPLC

**SOLUBILITY:** >30 mg/ml DMSO

**DESCRIPTION:** TPPU is a potent, brain-permeable, soluble epoxide hydrolase (sEH) inhibitor (IC<sub>50</sub> values are 1.1 and 2.1 nM for murine and human receptor, respectively). Inhibits MAPK and NF-κB signaling, as well as reducing ER stress and cell death in models of pancreatitis. The pharmacokinetics of this compound are dramatically superior to those of the 1-adamantylurea based inhibitors, like AUDA.

**STORAGE TEMPERATURE:** -20°C. Protect from light

**HANDLING:** Do not take internally. Wear gloves and mask when handling the product! Avoid contact by all modes of exposure.

**RELATED PRODUCTS:**

Soluble Epoxide Hydrolase Activity Assay Kit (Fluorometric) (K477)  
Soluble Epoxide Hydrolase Inhibitor Screening Kit (Fluorometric) (K480)  
Anti-EPHX1 Antibody (A1700)

**DISCLAIMER:** *FOR RESEARCH USE ONLY! Not to be used on humans.*