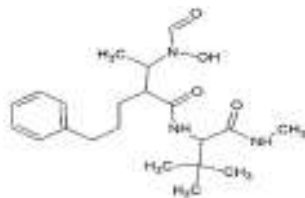


GI254023X

ALTERNATE NAME: (2R)-N-[(1S)-2,2-Dimethyl-1-[(methylamino)carbonyl]propyl]-2-[(1S)-1-(N-hydroxyformamido)ethyl]-5-phenylpentanamide

CATALOG #: B3314-5 5 mg
B3314-25 25 mg

STRUCTURE:



MOLECULAR FORMULA: C₂₁H₃₃N₃O₄

MOLECULAR WEIGHT: 391.5

CAS NUMBER: 260264-93-5

APPEARANCE: White solid

PURITY: ≥98% by HPLC

SOLUBILITY: >5 mg/ml DMSO

DESCRIPTION: GI254023X is a potent and selective ADAM10 metalloprotease inhibitor that displays over 100-fold higher potency at ADAM10 compared to ADAM17. Blocks constitutive release of IL-6R, CX3CL1 and CXCL16 in cell-based cleavage experiments. Inhibits calcium ionophore-induced betacellulin shedding in IMPE cells. Inhibits ADAM10 mediated neuronal outgrowth of dorsal root ganglion neurons in vitro.

STORAGE TEMPERATURE: -20°C. Protect from moisture

HANDLING: Do not take internally. Wear gloves and mask when handling the product! Avoid contact by all modes of exposure.

RELATED PRODUCTS:

Funalenone (B3225)
TAPI-0 (2067)
TAPI-2 (2069)
EZSolution™ Batimastat (2540)
ADAM10 Antibody (3201)

DISCLAIMER: *FOR RESEARCH USE ONLY! Not to be used on humans.*