

EZAct™ Procathepsin Activation Buffer

CATALOG #: 1030-1

AMOUNT: 1 ml

STORAGE: After receipt, aliquot into 100 µl vials and store at -20 °C. Avoid repeat freeze/thaw cycles

DESCRIPTION: Cathepsins (CTS) are proteases that degrade proteins. They are present in all animals and other organisms. These proteases are of three types: cysteine proteases, aspartyl protease and serine proteases. Cathepsins are produced as inactive proenzyme precursors that are subsequently activated in lysosomes. Biovision's EZAct™ Procathepsin Activation Buffer is a ready-to-use buffer for generation of active cysteine/aspartyl Cathepsins by auto-activation of the Procathepsins.

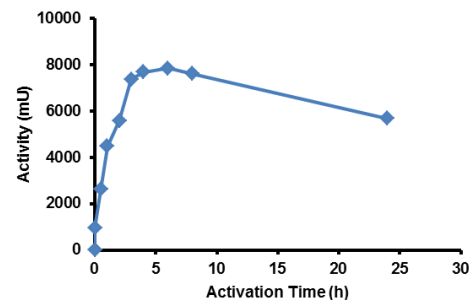
APPLICATIONS:

1. To generate active Cathepsins from inactive Procathepsins.
2. To test the activity of Cathepsins.
3. To screen for Cathepsin Inhibitor candidates.

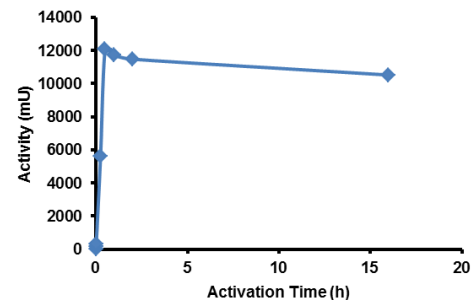
ACTIVATION PROTOCOL:

1. Adjust the concentration of the target Procathepsin to 0.5-5 mg/ml with the appropriate buffer.
2. Add equal amounts of EZAct™ Procathepsin Activation Buffer and mix well by pipetting up and down.
3. Incubate at the appropriate temperature (4°/ 22°/ 37°C) for the study.
4. Check the cathepsin activation by testing with an appropriate substrate.

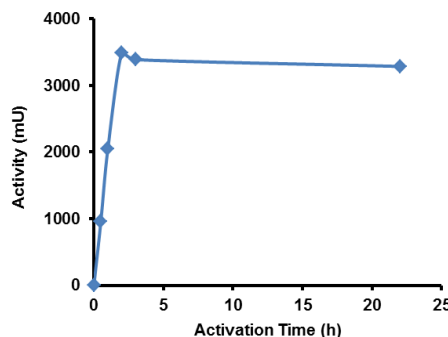
Note: BioVision's Cathepsin Assay kits can be used for assaying the Cathepsin activity. Choose from assay kits: K140, K141, K142, K143, K144, K145 and K146.



Activation of human recombinant Procathepsin B (Cat # 7579) using EZAct™ Procathepsin Activation Buffer.



Activation of human recombinant Procathepsin L (Cat # 7581) using EZAct™ Procathepsin Activation Buffer.



Activation of human recombinant Procathepsin K (Cat # 1026) using EZAct™ Procathepsin Activation Buffer.

RELATED PRODUCTS:

- Procathepsin K, human recombinant (Cat. No. 1026-10, 50, -1000)
- Procathepsin K, mouse recombinant (Cat. No. 1027-10, 50, -1000)
- Procathepsin K, rat recombinant (Cat. No. 1029-10, 50, -1000)
- Procathepsin B, human recombinant (Cat. No. 7579-10, 50, -1000)
- Procathepsin L, human recombinant (Cat. No. 7581-10, 50, -1000)
- Cathepsin K, Active, human recombinant (Cat. No. 7600-5, -50)
- Cathepsin K, Active, mouse recombinant (Cat. No. 7597-5, -50)
- Cathepsin K, Active, rat recombinant (Cat. No. 7598-5, -50)
- Cathepsin B (active, human) (Cat. No. 1021-5)
- Cathepsin D (active, human) (Cat. No. 1022-5)
- Cathepsin H (active, human) (Cat. No. 1023-5)
- Cathepsin L, human recombinant (Cat. No. 1135-5, 100, 1000)

FOR RESEARCH USE ONLY! Not to be used in humans.