

EZLys™ Tissue Protein Extraction Reagent

rev. 06/13

(Store at 4°C)

Cat. No.	Description
8002-100	EZLys™ Tissue Protein Extraction Reagent, 100 ml, sufficient to extract protein from ~ 10-20 g of tissues
8002-500	EZLys™ Tissue Protein Extraction Reagent, 500 ml, sufficient to extract protein from ~ 50-100 g of tissues

I. Introduction:

Biological tissues are a complex network of cells. To analyze the function of the tissues, it is necessary to lyse the cells to study the function of individual cells and proteins. BioVision's EZLys™ Tissue Protein Extraction Reagent has been developed for the extraction of total proteins from the animal tissues. The protein extract prepared from the tissues using Tissue Protein Extraction Reagent can be used for most of the assays e.g. ELISA, Western Blot, immunoprecipitation, reporter assays and protein purification.

II. Applications:

- Protein purification
- Immunoassays (SDS PAGE, Western Blotting, ELISA etc.)
- Immunoprecipitation
- Reporter assays

III. Sample Type:

Animal tissues

IV. Contents:

Tissue Protein Extraction Reagent

V. Storage and Handling:

Store buffer at 4°C, protected from light. Read the entire protocol before performing the assay

VI. User supplied reagents:

DNase I, protease inhibitor cocktail (Cat # K272)

VII. Tissue Protein Extraction Reagent Protocol:

1. Weigh the tissue sample. For each gram of tissue, use approximately 10-15 ml of cold EZLys™ Tissue Protein Extraction Reagent and 100-150 U of DNase I. For more concentrated protein extract, use 4 ml of Tissue Protein Extraction Reagent per gram of tissue.
Note: In order to avoid protein degradation, we recommend that you add protease inhibitor cocktail (Cat # K272).
2. Homogenize using Dounce homogenizer (Cat # 1998). Centrifuge at 10,000 X g at 4°C for 10 min. to remove the debris.
3. Collect the supernatant. Determine the protein concentration using Bradford. Continue with downstream applications. For future use, aliquot the tissue protein extract, snap-freeze in liquid nitrogen and store at -70°C.

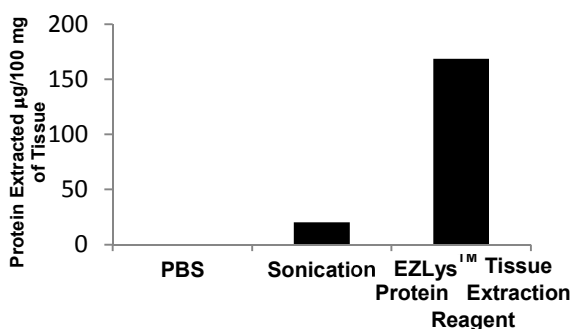


Figure: BioVision Tissue Protein Extraction Reagent: Total protein was extracted from mouse liver tissue using PBS (Sonication 5 min. with 50% pulse on ice) and EZLys™ Tissue Protein Extraction Reagent (homogenized with 15 strokes). Protein content in extracts was determined with Bradford. Results are normalized per 100 mg of tissue.

VIII. RELATED PRODUCTS

EZLys™ Bacterial Protein Extraction Reagent (8001)
 EZLys™ Mammalian Protein Extraction Reagent (8004)
 Western Blot Substrate Kit (K820)
 BCA Protein Quantitation Kit (K812, K813, K814)
 Protease & Phosphatase inhibitor cocktails (K283, K284)
 β -Galactosidase Staining Kit (K802)
 Membrane Protein Extraction Kit (K268)

EZLys™ Yeast Protein Extraction Reagent (8003)
 EZLys™ lysozyme, human (8005)
 Protein Quantitation kit (K810)
 Protein Carbonyl Content Assay Kit (K830)
 Protease inhibitor cocktails (K271, K272, K277, K278, K279)
 Luciferase Reporter Assay Kit (K801)
 Dounce Tissue Grinder (1998)

FOR RESEARCH USE ONLY! Not to be used on humans