

# EZLys™ Mammalian Protein Extraction Reagent

rev. 08/13

(Store at 4°C)

**Cat. No.****8004-100****EZLys™ Mammalian Protein Extraction Reagent**, 100 ml, sufficient to extract protein from ~ 10-20 g of cells**8004-500****EZLys™ Mammalian Protein Extraction Reagent**, 500 ml, sufficient to extract protein from ~ 50-100 g of cells**I. Introduction:**

BioVision's EZLys™ Mammalian Protein Extraction Reagent has been developed for the extraction of total proteins from cultured mammalian cells. This Mammalian Protein Extraction Reagent provides optimized cell extraction buffer for convenient extraction of mammalian proteins from both adherent & suspension cells under non-denaturing conditions in less than 20 minutes. Cell lysate prepared using this buffer can be used in a variety of applications, such as enzyme activity assays (e.g., caspase activity assays), Western blot analysis, reporter assays, immunoprecipitation etc.

**II. Applications:**

- Protein purification
- Enzyme Activity Assay (caspase activity etc.)
- Immunoassays (SDS PAGE, Western Blotting, ELISA, RIA etc.)
- Immunoprecipitation
- Reporter assays.

**III. Sample Type:**

Cultured cells: Adherent &amp; suspension cells

**IV. Contents:**

Mammalian Protein Extraction Reagent

**V. Storage and Handling:**

Store buffer at 4°C, protected from light. Read the entire protocol before performing the assay.

**VI. User Supplied Reagent:**

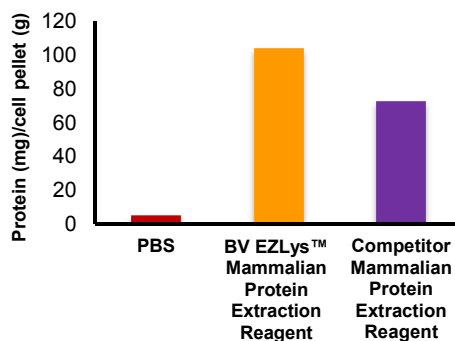
DNase I, protease inhibitor cocktail (Cat # K272)

**VII. Mammalian Protein Extraction Reagent Protocol:**

1. Collect cells by centrifugation at 600 x g for 5 min. at 4°C. For adherent cells, scrape cells into PBS and spin down to pellet cells.
2. For each gram of wet cell pellet, use 10 ml of cold EZLys™ Mammalian Protein Extraction Reagent. Pipet up and down several times. Incubate the cells solution for 20 min. on ice.

Note:

- a. For more concentrated protein extract, use 5 ml of EZLys™ Mammalian Protein Extraction Reagent for each gram of cell pellet.
  - b. To avoid protein degradation, we recommend that you add protease inhibitor cocktail (Cat # K272).
  - c. High extract viscosity can be addressed by adding 10-15 U of DNase I per each ml of the extraction reagent.
3. Centrifuge at 10000 x g for 15 min. at 4°C. Collect the clear supernatant for analysis. For long-term storage, aliquot the protein extract, snap-freeze in liquid nitrogen and store at -70°C.



**Figure: EZLys™ Mammalian Protein Extraction Reagent:** BioVision's EZLys™ Mammalian Protein Extraction reagent was compared with PBS or Competitor's Mammalian Protein Extraction reagent. Total mammalian protein was extracted from SHM-D33 cells & quantitated using BCA assay Kit (K813).

**VIII. RELATED PRODUCTS**

EZLys™ Bacterial Protein Extraction Reagent (8001)

EZLys™ Tissue Protein Extraction Reagent (8002)

Western Blot Substrate Kit (K820)

BCA Protein Quantitation Kit (K812, K813, K814)

Protease &amp; Phosphatase inhibitor cocktails (K283, K284)

β-Galactosidase Staining Kit (K802)

EZLys™ Yeast Protein Extraction Reagent (8003)

EZLys™ lysozyme, human (8005)

Protein Quantitation kit (K810)

Protein Carbonyl Content Assay Kit (K830)

Protease inhibitor cocktails (K271, K272, K277, K278, K279)

Luciferase Reporter Assay Kit (K801)

**FOR RESEARCH USE ONLY! Not to be used on humans**