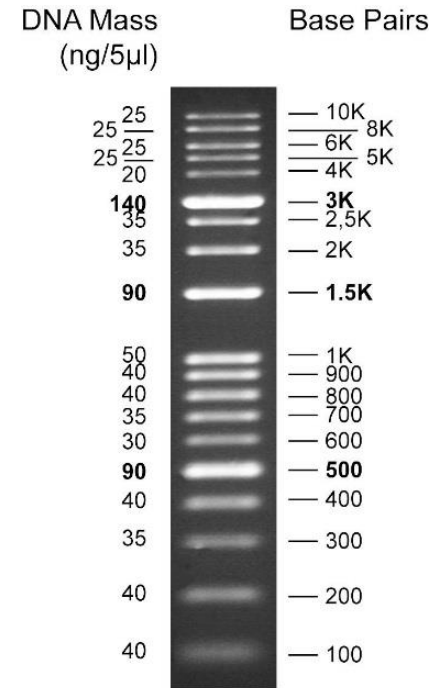


## 1 kb DNA Ladder

<b>CATALOG NO.:</b>	M1157-500
<b>AMOUNT:</b>	500 µl (100 loads)
<b>RANGE:</b>	100 bp-10 kb
<b>NUMBER OF BANDS:</b>	19
<b>SUGGESTED LOAD:</b>	5 µl
<b>FORM:</b>	Liquid
<b>SOURCE:</b>	PCR products and double-stranded DNA digested with appropriate restriction enzymes, are phenol extracted and equilibrated to 10 mM Tris-HCl (pH 8.0) and 1 mM EDTA.
<b>STORAGE CONDITIONS:</b>	Store at 4°C for up to 3 months or -20°C for up to 24 months
<b>DESCRIPTION:</b>	PCR products and double-stranded DNA were digested with appropriate restriction enzymes to completion to yield 19 bands, ranging from 100 bp-10 kb, for molecular weight standards in agarose gel electrophoresis. The 500, 1500, and 3000 base pair bands have increased intensity to serve as quick reference points. Approximate mass of each DNA band is provided (for a loading size of 5 µl of the DNA ladder) for approximating the mass of DNA in comparably intense DNA samples of similar size.



1.5 % TAE agarose gel

**RELATED PRODUCTS:**

- Image Green™ 100 bp DNA Marker (Cat# M1156-500)
- Image Green™ 1 kb DNA Marker (Cat# M1155-500)
- 1 kb DNA Ladder (Cat# M1157-500)
- 100 bp DNA Ladder (Cat# M1158-500)
- Wide range 1 kb DNA Ladder (Cat# M1191-500)
- Wide range 100 bp DNA Ladder (Cat# M1192-500)

**FOR RESEARCH USE ONLY! Not to be used on humans.**