

Recombinant Human soluble CD40Ligand/TRAP

| | | |
|-------------------------|--|-------|
| CATALOG NO: | 4014-10 | 10 µg |
| | 4014-50 | 50 µg |
| | 4014-1000 | 1 mg |
| SOURCE: | <i>E. coli</i> (Met113 - Leu261) | |
| PURITY: | >95% by SDS-PAGE | |
| ENDOTOXIN LEVEL: | <0.1 ng/µg (1 IEU/µg) | |
| MOL. WEIGHT: | 16.3 kDa | |
| FORM: | Lyophilized from a 0.2 µm filtered solution of 20mM PB, 200mM NaCl, 0.1mM EDTA, pH 7.0 | |

RECONSTITUTION:

Always centrifuge tubes before opening. Do not mix by vortex or pipetting. It is not recommended to reconstitute to a concentration less than 100 µg/ml. Dissolve the lyophilized protein in distilled water. Aliquot the reconstituted solution to minimize freeze-thaw cycles.

STORAGE CONDITIONS:

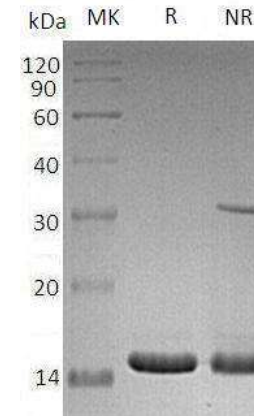
Lyophilized protein should be stored at < -20°C, though stable at room temperature for 3 weeks. Reconstituted protein solution can be stored at 4-7°C for 2-7 days. Aliquots of reconstituted samples are stable at < -20°C for 3 months.

DESCRIPTION:

CD40 Ligand (CD40LG) is a type II transmembrane glycoprotein that belongs to the TNF superfamily. Like other TNF superfamily members, CD40LG exists as a trimer in membrane bound and soluble form, both of which are bioactive. CD40LG is a ligand for CD40; its ligation also initiates signal transduction in CD40LG expressing cells. CD40LG is a differentiation antigen that is expressed on the surface of T-cells. It stimulates B-cell proliferation and secretion of all immunoglobulin isotypes in the presence of cytokines. CD40LG has been shown to induce cytokine production and tumoricidal activity in peripheral blood monocytes. It also co-stimulates proliferation of activated T-cells and this is accompanied by the production of IFN-gamma, TNF-alpha, and IL2.

BIOLOGICAL ACTIVITY:

Measured by the dose-dependent stimulation of IL-12 & IL-8 induction by PMB cells. ED50 is 5-10 ng/ml.



Recombinant Human soluble CD40Ligand/TRAP

RELATED PRODUCTS:

- CD40 Antibody (**Cat. No. 3072**)
- Human CellExp™ Human CD40/ TNFRSF5, Human recombinant (**Cat. No. 9230**)
- CD40L Antibody (**Cat. No. 5015**)
- Anti-CD40L (Ruplizumab), Human IgG1 Antibody (**Cat. No. A1094**)
- CD40 Blocking Peptide (**Cat. No. 3072BP**)
- CD40L (human) ELISA Kit (**Cat. No. K4783**)

FOR RESEARCH USE ONLY! Not to be used on humans.