

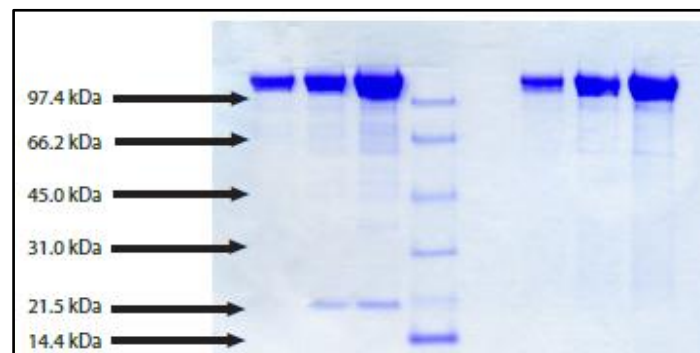
Ceruloplasmin, Human Plasma

CATALOG #:	4096-1000	1 mg
SOURCE:	Human plasma (Prepared from plasma shown to be non-reactive for HbsAG, anti-HCV, anti-HBc, and negative for anti-HIV 1 & 2 by FDA approved tests).	
MOL. WEIGHT:	132.0 kDa	
PURITY:	≥ 95% by SDS-PAGE	
FORM:	Lyophilized from 50 mM potassium phosphate, pH 6.8, 100 mM KCl and 20 mM ϵ -amino caproic acid + 5 mM EDTA.	
RECONSTITUTION:	Deionized water	

STORAGE CONDITIONS: At -20°C. Store the reconstituted product aliquoted at -20°C. Avoid freeze-thaw cycles of reconstituted product

DESCRIPTION: An acute-phase reactant. Increased levels are associated with normal pregnancy, rheumatoid arthritis, and cirrhosis. Decreased levels are associated with hepatolenticular degeneration (Wilson's disease). An elevated level of Cp is found in patients with progressive tumors. Additionally, as Cp is a pro-oxidant, an elevated level is a sign of cardiovascular disease.

SDS-PAGE data:



1. Ceruloplasmin - 5 µg (reduced / heated)
2. Ceruloplasmin - 10 µg (reduced / heated)
3. Ceruloplasmin - 20 µg (reduced / heated)
4. LMW Standard (BIO-RAD Cat. No. 161-0304)
5. Ceruloplasmin - 5 µg (non-reduced / no heat)
6. Ceruloplasmin - 10 µg (non-reduced / no heat)
7. Ceruloplasmin - 20 µg (non-reduced / no heat)

RELATED PRODUCTS:

Ceruloplasmin Activity Colorimetric Assay Kit (Cat. No. K669)
Ceruloplasmin Antibody (Cat. No. 7019)
Ceruloplasmin, Human Plasma (Cat. No. P1452)
Alpha 1 Antitrypsin, Human Plasma (Cat. No. 7294)
Alpha 1 Antitrypsin Antibody (Cat. No. 7009)

FOR RESEARCH USE ONLY! Not to be used in humans.