

## Recombinant Human Interleukin-2 (IL-2)

<b>CATALOG #:</b>	4131-10	10 µg
	4131-50	50 µg
	4131-1000	1 mg
<b>SOURCE:</b>	<i>E. coli</i>	
<b>PURITY:</b>	>95% by SDS-PAGE and HPLC analysis Endotoxin level is <0.1 ng per µg of IL-2.	
<b>MOL. WEIGHT:</b>	15.5 kDa	
<b>FORMULATION:</b>	Lyophilized with no additives	

### RECONSTITUTION:

Centrifuge the vial prior to opening. Reconstitute in H<sub>2</sub>O to a concentration of 0.1-1.0 mg/ml. The reconstituted solution can be diluted into other aqueous buffers or stored at 4 °C for one week or at -20 °C for future use.

### STORAGE CONDITIONS:

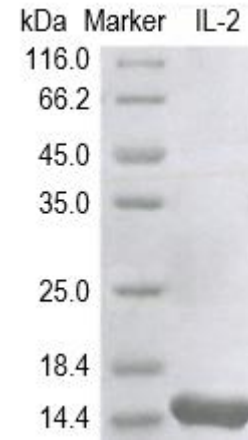
The lyophilized IL-2 is best-stored desiccated below 0 °C. Reconstituted IL-2 should be stored at working aliquots at -20 °C. For long-term storage it is recommended to add a carrier protein (0.1% HSA or BSA).

### DESCRIPTION:

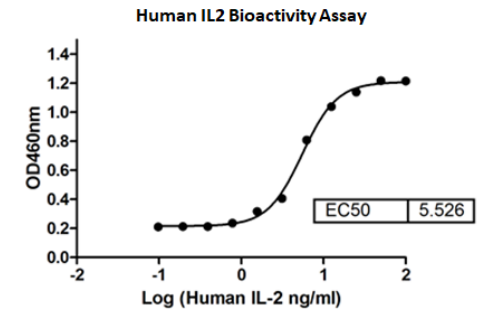
IL-2 is a potent immuno-modulator, which mediates a wide range of immune and inflammatory responses. Recombinant Human IL-2 is a 15.5 kDa protein containing 134 amino acid residues.

### BIOLOGICAL ACTIVITY:

The ED<sub>50</sub> as determined by the dose-dependent stimulation of murine CTLL-2 cells is ≤ 10 ng/ml, corresponding to a specific activity of ≥ 1 x 10<sup>5</sup> units/mg.



IL-2, Human Recombinant was loaded on SDS-PAGE and visualized with Coomassie blue stain.



Typical bioactivity assay using IL-2, Human Recombinant. Murine CTLL-2 cells were stimulated with varying dilutions of IL-2. Proliferation rate was measured using the Quick Cell Proliferation Colorimetric Assay Kit Plus (BioVision Cat. No. K302).

### RELATED PRODUCTS:

- IL-2 Receptor α, Human Recombinant (7100)
- Human CellExp™ IL-2 R beta /CD122, human recombinant (7391)
- IL-2, human recombinant (4131)
- IL-2, rat recombinant (4133)
- IL-2, murine recombinant (4132)
- Human CellExp™ IL-2, Human Recombinant (6461)
- Human CellExp™ IL-2, Human Recombinant (P1385)
- Human CellExp™ IL-2 R alpha / CD25, Mouse Recombinant (P1464)
- Human CellExp™ CD25/IL-2R alpha, C-His Tag, Human Recombinant (P1303)

**FOR RESEARCH USE ONLY! Not to be used in humans.**