

Interleukin-15 (IL-15), Murine Recombinant

CATALOG #:	4171-10	10 µg
	4171-1000	1 mg
SOURCE:	<i>E. coli</i>	
PURITY:	≥ 98% by SDS-PAGE and HPLC analysis Endotoxin level is <0.1 ng per µg.	
MOL. WEIGHT:	13.3 kDa	
FORMULATION:	Sterile filtered using 0.2 micron filter. Lyophilized from 10 mM Sodium Phosphate, pH 8.0	

RECONSTITUTION:

Centrifuge the vial prior to opening. Reconstitute in water to a concentration of 0.5-1.0 mg/ml. The solution can then be diluted into other aqueous buffers containing a carrier protein or stabilizer (i.e 0.1% BSA). Store at -20 °C to -80 °C.

STORAGE CONDITIONS:

The lyophilized murine IL-15 is best-stored desiccated below 0 °C. Reconstituted IL-15 should be stored at working aliquots at -20 °C. Avoid freeze/thaw cycles.

DESCRIPTION:

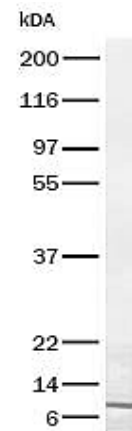
IL-15 is a potent lymphoid cell growth factor that exerts its biological activities primarily on T cells. Recombinant murine IL-15 is a 13.3 kDa protein containing 115 amino acid residues.

BIOLOGICAL ACTIVITY:

The ED₅₀ as determined by the dose-dependent stimulation of the proliferation of mouse CTLL-2 cells is ≤ 5 ng/ml, corresponding to a specific activity of ≥ 2 x 10⁵ units/mg.

AMINO ACID SEQUENCE:

MNWDVRYDL EKIESLIQSI HIDTTLTYTDS DFHPSCKVTA MNCFLLELQV ILHEYSNMTL
NETVRNVLYL ANSTLSSNKN VAESGCKECE ELEEKTFTEF LQSFIRIVQM FINTS



SDS-PAGE (4-20%) of Murine IL-15: 1 µg of murine IL-15 loaded under reducing conditions and stained with Coomassie Blue. Murine IL-15 has a predicted MW of 13.3 kDa.

RELATED PRODUCTS:

- IL-15, human recombinant (**Cat # 4170-10, -50, -1000**)
- IL-15, rat recombinant (**Cat # 4172-10, -1000**)
- IL-15, Human CellExp™, human recombinant (**Cat # 7273-10**)
- IL-15 (human) ELISA Kit (**Cat # K4739-100**)
- IL-15 Antibody (**Cat # 5170-100**)
- IL-15 Antibody (**Cat # 5171-100**)
- IL-15 Antibody (**Cat # 5172-100**)

FOR RESEARCH USE ONLY! Not to be used on humans.