

## Recombinant Human PTHrP

<b>CATALOG #:</b>	4651-10	10 µg
	4651-50	50 µg
	4651-500	500 µg
	4651-1000	1 mg
<b>LOT #:</b>	_____	
<b>SOURCE:</b>	<i>E. coli</i>	
<b>PURITY:</b>	>98% by SDS-PAGE and HPLC analysis Endotoxin level is <0.1 ng per µg of PTHrP.	
<b>FORM:</b>	Sterile filtered and lyophilized without additives.	

### RECONSTITUTION:

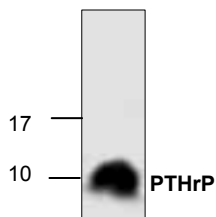
Centrifuge the vial prior to opening. Reconstitute in water to a concentration of 0.1-1.0 mg/ml. This solution can then be diluted into other aqueous buffers and stored at 4°C for 1 week or -20°C for future use.

### STORAGE CONDITIONS:

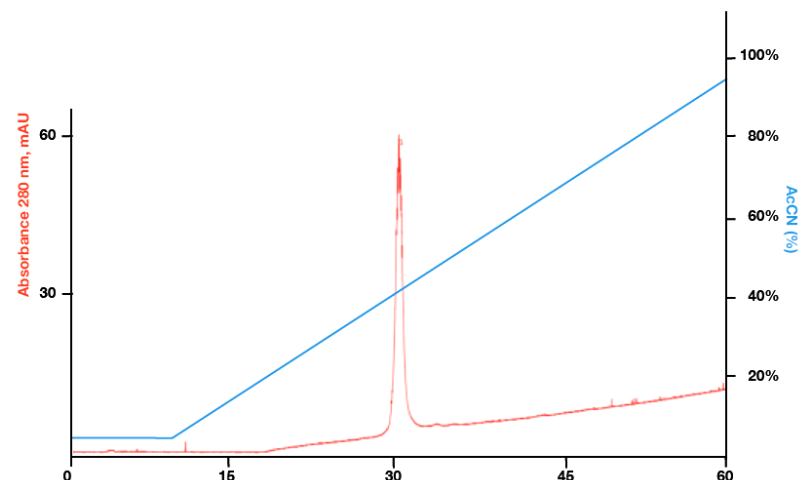
The lyophilized protein is best-stored desiccated below 0°C. Reconstituted PTHrP should be stored in working aliquots at -20°C.

### DESCRIPTION:

Parathyroid Hormone-like related Protein (PTHrP) is a member of the Parathyroid hormone family that is expressed in the mammary gland. It is known as a potent inhibitor of chondrocyte maturation. PTHrP is expressed by periarticular perichondrial cells and exerts its biological activity on PP-R expressing cells. During endochondral bone development PTHrP plays a major role in suppressing the onset of hypertrophic differentiation. It is also responsible for most cases of humoral hypercalcemia of malignancy. Recombinant Human PTHrP is a 9.8 kDa protein consisting of 86 amino acid residues.



**Cat. #: 4651-10**  
Purity of recombinant human PTHrP (2 µg) was analyzed by reduced SDS-PAGE electrophoresis.



HPLC analyses of rh PTHrP. 200 µg of rh PTHrP were loaded on Phenomenex Gemini C18 column (250 x 4.6 mm 5 µm). The column was eluted with a 50 minute gradient of AcCN from 5 to 95% in 0.1% TFA at 1 ml/min.

### RELATED PRODUCTS:

#### Signal Transduction

- cAMP & cGMP Assay Kits
- Akt & JNK Activity Assay Kits
- Beta-Secretase Activity Assay Kit

#### Adipocyte & Lipid Transfer

- Recombinant Adiponectin, Survivin, & Leptin
- CETP Activity Assay & Drug Discovery Kits
- Total Cholesterol Quantification Kit

#### Molecular Biology & Reporter Assays

- siRNA Vectors
- Cloning Insert Quick Screening Kit
- Mitochondrial & Genomic DNA Isolation Kits
- 5 Minutes DNA Ligation Kit
- 20 Minutes Gel Staining/Destaining Kit

#### Antibodies & Recombinant Proteins (many)