

# Prolactin, Recombinant Human

<b>CATALOG #:</b>	4687-10	10 µg
	4687-50	50 µg
	4687-1000	1 mg
<b>SOURCE:</b>	<i>E.coli</i>	
<b>PURITY:</b>	>95% by SDS-PAGE	
<b>ENDOTOXIN:</b>	<0.1 ng per µg of Prolactin.	
<b>MOL. WEIGHT:</b>	23.3 kDa (199 aa, 29-227)	
<b>FORM:</b>	Lyophilized	
<b>Formulation:</b>	Sterile Filtered lyophilized (freeze-dried) powder from 50 mM Tris, 100 mM NaCl, pH 8.0.	

**RECONSTITUTION:**

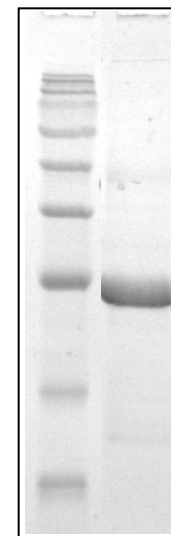
Centrifuge the vial prior to opening. Reconstitute in water to a concentration of 1.0 mg/ml. This solution can then be diluted into other aqueous buffers and stored at 4°C for 1 week or -20°C for future use.

**STORAGE CONDITIONS:**

The lyophilized protein is best-stored desiccated below 0°C. Reconstituted human Prolactin should be stored at working aliquots at -20°C.

**DESCRIPTION:**

Prolactin (also known as mammothrophin, luterotropic hormone, and lutetropin) is a neuroendocrine hormone secreted by the pituitary gland. Its primary function is to promote and maintain lactation during pregnancy and suckling. In addition, Prolactin plays an immune-regulatory role by stimulating the activities of ornithine decarboxylase and protein kinase C, which are important for the proliferation, differentiation, and function of lymphocytes. Recombinant human Prolactin is a 23 kDa globular protein containing 200 amino acid residues.



SDS-PAGE (15%) of purified human recombinant Prolactin protein.  
Lane 1: Marker  
Lane 2: 30 µg protein

**RELATED PRODUCTS:**

- Prolactin Antibody (**Cat. No. 5688**)
- Prolactin Antibody (**Cat. No. 5689**)
- Prolactin Receptor, Human Recombinant (**Cat. No. 4989**)
- Prolactin Receptor, Rat Recombinant (**Cat. No. 4991**)
- Prolactin, Murine Recombinant (**Cat. No. 4688**)
- Prolactin, Rat Recombinant (**Cat. No. 4689**)

**FOR RESEARCH USE ONLY! Not to be used on humans.**