

# CRP, Human Recombinant

<b>CATALOG #:</b>	4863-10	10 µg
	4863-50	50 µg
	4863-100	100 µg
	4863-1000	1 mg
<b>ALTERNATE NAMES:</b>	C-reactive protein, CRP, PTX1, MGC88244, MGC149895	
<b>SOURCE:</b>	<i>E. coli</i>	
<b>PURITY:</b>	≥ 95% by SDS-PAGE, RP-HPLC.	
<b>MOL. WEIGHT:</b>	115 kDa	
<b>FORMULATION:</b>	In 20 mM Tris (pH 7.5), 2 mM CaCl <sub>2</sub> , 0.14 M NaCl and 0.05% NaN <sub>3</sub> .	

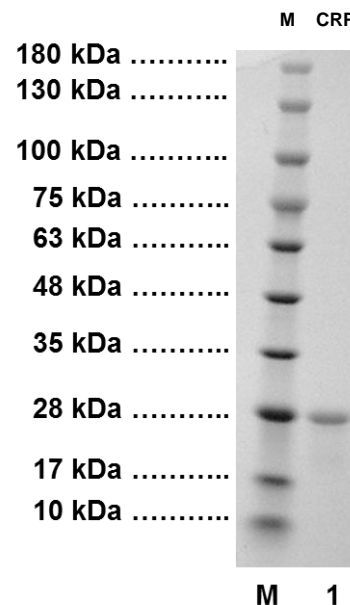
**PHYSICAL APPEARANCE:** Sterile filtered Clear solution

**STORAGE CONDITIONS:**

CRP solution should be stored at 4 °C.

**DESCRIPTION:**

Recombinant Human C-Reactive Protein produced in *E. Coli* is a non-glycosylated polypeptide chain having a total molecular mass of 115 kDa, corresponding to the pentamer structure of 23 kDa monomers determined by amino acid sequence. Recombinant Human CRP is purified by proprietary chromatographic techniques.



**4-20% SDS-PAGE of Human CRP:**  
**M:** Protein Marker  
**1:** 5 µg Human CRP

**4-20% SDS-PAGE of Human CRP:** 5 µg of Recombinant human CRP (C-reactive protein) was loaded in each lane under reducing conditions and stained with Coomassie Blue. Recombinant human CRP has a predicted MW of ~ 115 kDa corresponding to the pentameric structure of 23 kDa monomers.

**RELATED PRODUCTS:**

- Human CellExp™ C-reactive/CRP, human recombinant (**Cat. No. 7242-100**)
- CRP (rat) ELISA Kit (**Cat. No. K4764-100**)
- C-Reactive Protein, Human fluids (**Cat. No. P1441**)

**FOR RESEARCH USE ONLY! Not to be used on humans.**

