

# Cystatin C, Human CellExp™, Human Recombinant

<b>CATALOG #:</b>	4878-10	10 µg
	4878-50	50 µg
<b>ALTERNATE NAMES:</b>	Cystatin-3, Gamma-trace neuroendocrine basic polypeptide, Post-gamma-globulin	
<b>SOURCE:</b>	Human Cell Expressed	
<b>PURITY:</b>	> 95% by SDS - PAGE	
<b>MOL. WEIGHT:</b>	12 - 13 kDa, monomer, glycosylated.	
<b>ENDOTOXIN LEVEL:</b>	< 1.0 EU per 1 µg of protein	
<b>FORMULATION:</b>	Lyophilized in PBS	
<b>RECONSTITUTION:</b>	Reconstitute in sterile PBS.	

**STORAGE CONDITIONS:**

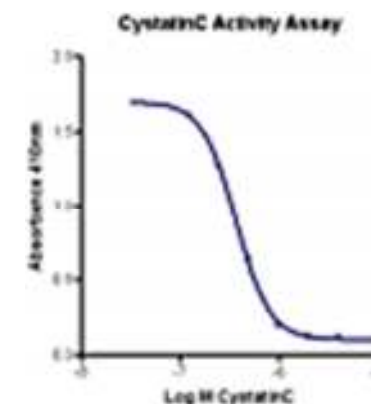
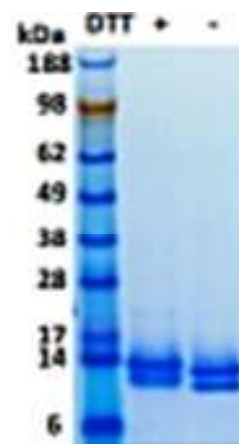
Aliquot and store at -20°C or -70°C. Avoid repeated freezing and thawing cycles.

**DESCRIPTION:**

Xeno-free Cystatin C HuXp (Cys-C) is expressed in human 293 cells as a monomer with an apparent molecular mass of 12 to 13 kDa. Native Cys-C in human urine is found in two different forms: one with pI 9.2 and the other with pI 7.8 by elimination of small basic peptides or amino acids from the N-terminal end of protein. Cystatin C has been studied for its role in predicting new onset or deteriorating cardiovascular disease. This cytokine is produced in a serum-free, chemically defined media.

**BIOLOGICAL ACTIVITY:**

Typically 0.3 to 1.5 µM IC50. The inhibitory function of Cystatin C on papain's protease activity was measured by a colorimetric assay using L-BAPA as substrate. IC50 value was measured at 5 to 20 µg/mL (0.3 to 1.5 µM) with a range of 1.56 µg/mL to 50 µg/mL Cystatin C in presence of 0.55 µM papain and 0.44 µM L-BAPA.



Human Recombinant Cystatin C

**FOR RESEARCH USE ONLY! Not to be used in humans.**

**RELATED PRODUCTS:**

- Cystatin A Antibody (Clone WR 23/2/3/3) (Cat. No. 3486-100)
- Cystatin B Antibody (Clone RJMW2E7) (Cat. No. 3487-100)