

Recombinant Human LBP

CATALOG #:	4935-10	10 µg
SOURCE:	CHO-cells	
PURITY:	>90-95% by SDS-PAGE analyses Endotoxin level is <0.03 ng per ml.	
MOL. WEIGHT:	58 kDa	
FORM:	Lyophilized from a concentrated protein solution (0.25 mg/ml) containing PBS, pH 7.2	

RECONSTITUTION:

Centrifuge the vial prior to opening. Reconstitute in 40 µl of ultra-pure distilled water. This solution can then be diluted into other aqueous buffers and stored at -20°C or -70°C for future use.

STORAGE CONDITIONS:

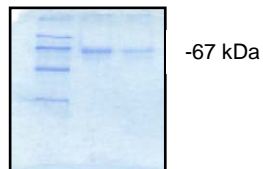
The lyophilized protein is best-stored desiccated below 0°C. Reconstituted protein should be used immediately or stored in undiluted working aliquots at -20°C. For long term storage it is recommended to add a carrier protein (0.1% BSA). Repeated freezing and thawing should be avoided!!!

DESCRIPTION:

Natural LBP is a 58 kDa glycoprotein produced in liver. It binds at lipid A of LPS with high affinity (10^{-9} M) and reduced the cellular LPS effects at CD14⁺ cells (IL1β, IL6, TNFα). It acts as opsonin for GRAM negative cells, LPS, neutrophils and granulocytes. This is a His-tagged protein.

BIOLOGICAL ACTIVITY:

Up to 0.2 µg/ ml LBP mediates binding of FITC-LPS (0.5µg/ml) to CD14⁺CHO transfectants (FACS).

GEL IMAGE:**RELATED PRODUCTS:**

Recombinant Mouse LBP (**Cat. No.4936-10**)
FABP1, human recombinant (**Cat. No.4501-25, 100, 1000**)
FABP3, human recombinant (**Cat. No.4503-100**)
FABP4, human recombinant (**Cat. No.4504-25,100, 1000**)
FABP5, human recombinant (**Cat. No.4505-25, 100, 1000**)
FABP7, human recombinant (**Cat. No.4507-25, 100, 1000**)
HDLBP Antibody (**Cat. No.3853-100**)
HDLBP Peptide (**Cat. No.3853BP-50**)

FOR RESEARCH USE ONLY! Not to be used in humans.