

## Human Recombinant SHP-1

<b>CATALOG #:</b>	6302-100	100 µg
<b>ALTERNATE NAMES:</b>	Protein tyrosine phosphatase, non-receptor type 6 isoform 1, PTPN6, HCP, HCPH, HPTP1C, PTP-1C, SH-PTP1, SHP-1L, SHP1.	
<b>SOURCE:</b>	E.Coli	
<b>PURITY:</b>	> 95% by SDS - PAGE	
<b>MOL. WEIGHT:</b>	34.3 kDa (300 aa), confirmed by MALDI-TOF	
<b>ENDOTOXIN LEVEL:</b>	< 1.0 EU per 1 µg of protein (determined by LAL method)	
<b>BIOLOGICAL ACTIVITY:</b>	>5,000 units/mg of SHP-1. Unit Definition: One unit will hydrolyze 1 nanomole of p-nitrophenylphosphate (pNPP) per minute at pH 7.4 at 37°C using 10 mM of substrate.	
<b>FORMULATION:</b>	1 mg/ml solution in 25 mM Tris-HCl buffer (pH 7.5) containing 1 mM DTT, 2 mM β-mercaptoethanol, 1 mM EDTA, 20% glycerol.	

### STORAGE CONDITIONS:

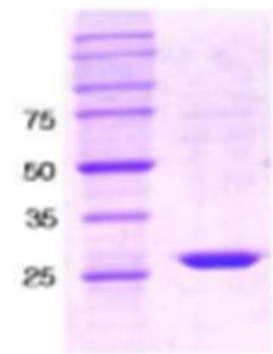
Can be stored at 4°C short term (1-2 weeks). For long term storage, aliquot and store at -20°C or -70°C. Avoid repeated freezing and thawing cycles.

### DESCRIPTION:

The protein coding region of the catalytic domain of SHP-1 (amino acids 243-541) was cloned into an E. coli expression vector. The catalytic domain of SHP-1 was overexpressed as insoluble protein aggregates (inclusion bodies). The recombinant SHP-1 protein was purified by FPLC gel-filtration chromatography, after refolding of the isolated inclusion bodies in a redox buffer. Additional amino acid (Met) is attached at N-terminus.

### AMINO ACID SEQUENCE:

MGFWEEFESL QKQEVKNLHQ RLEGQRPENK GKNRYKNILP FDHSRVILQG  
 RDSNIPGSDY INANYIKNQL LGPDENAKTY IASQGCLEAT VDNFWQMAWQ ENSRVIVMTT  
 REVEKGRNKC VPYWPEVGMQ RAYGPYSVTN CGEHDTEYK LRTLQVSPLD  
 NGDLIREIWH YQYLSWPDHG VPSEPGGVL SLDQINQRQE SLPHAGPIIV HCSAGIGRTG  
 TIIVIDMLME NISTKGLDCD IDIQKTIQMV RAQRSGMVQT EAQYKFIYVA IAQFIETTKK  
 KLEVLQSQKG QESEYGNITY



15% SDS-PAGE (3µg)

Human Recombinant SHP-1

**FOR RESEARCH USE ONLY! Not to be used in humans.**

### RELATED PRODUCTS:

- bpV(phen) (Cat. No. 1793-5)
- bpV(pic) (Cat. No. 1794-5)
- PTP1B Antibody (Cat. No. 3171-100)
- PTP1B Antibody (Cat. No. 3174-100)
- PTP1B Antibody (Clone 107AT531) (Cat. No. 3122-100)
- Phosphoseek™ PTP1B Assay kit (Cat. No. K707-400)