

## Human Recombinant Cyclophilin A

<b>CATALOG #:</b>	6311-100	100 µg
<b>ALTERNATE NAMES:</b>	Peptidylprolyl isomerase A, PPIA, CYPA, CYPH.	
<b>SOURCE:</b>	E.Coli	
<b>PURITY:</b>	> 95% by SDS - PAGE	
<b>MOL. WEIGHT:</b>	20 kDa (185 aa – 1-165 aa + His Tag).	
<b>ENDOTOXIN LEVEL:</b>	< 1.0 EU per 1 µg of protein (determined by LAL method)	
<b>FORMULATION:</b>	1 mg/ml solution in 20 mM Tris-HCl buffer (pH 8.0) containing 20 mM NaCl, 0.5 mM DTT, 10% glycerol.	

### STORAGE CONDITIONS:

Can be stored at 4°C short term (1-2 weeks). For long term storage, aliquot and store at -20°C or -70°C. Avoid repeated freezing and thawing cycles.

### DESCRIPTION:

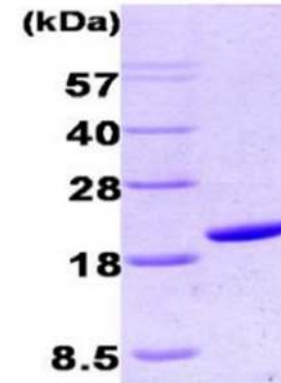
Cyclophilin A is a multifunctional protein that is upregulated in a variety of inflammatory conditions, such as rheumatoid arthritis, autoimmune disease, and cancer. It has been classified as an immunophilin and has a variety of intracellular functions, including intracellular signaling, protein trafficking, and the regulation of other proteins activity. Besides its intracellular functions, Cyclophilin A is a secreted molecule that has a physiological and pathological role in cardiovascular diseases, making it a potential biomarker and mediator in cardiovascular diseases, such as vascular stenosis, atherosclerosis, and abdominal aortic aneurysms.

### AMINO ACID SEQUENCE:

MGSSHHHHHH SSSLVPRGSH MVNPTVFFDI AVDGEPLGRV SFELFADKVP  
KTAENFRALS TGEKGFYK SCFHRIIPGF MCQGGDFTRH NGTGGKSIYG EK FEDENFIL  
KHTGPGILSM ANAGPNTNGS QFFICTAKTE WLDGKHVVFG KVKEGMNIVE  
AMERFGSRNG KTSKKITIAD CGQLE

### BIOLOGICAL ACTIVITY:

Specific activity is > 270 nmoles/min/mg, and is defined as the amount of enzyme that cleaves 1 µmole of Suc-AAFP-pNA per minute at 25°C in Tris HCl pH 8.0 using chymotrypsin.



15% SDS-PAGE (3ug)

Human Recombinant Cyclophilin A

### RELATED PRODUCTS:

- Cyclosporine A (Cat. No. 1522-100, 1G)
- Human Recombinant Cyclophilin B (Cat. No. 6310-100)
- Human Recombinant Cyclophilin D (Cat. No. 6312-100)
- Human Recombinant Cyclophilin D (Cat. No. 6312-100)
- Human Recombinant Cyclophilin H (Cat. No. 6313-100)

**FOR RESEARCH USE ONLY! Not to be used in humans.**