

Human Recombinant Cyclophilin H

CATALOG #:	6313-100	100 µg
ALTERNATE NAMES:	Peptidylprolyl isomerase H, CYPH, CYP20, SnuCyp-20, PPlase H, Rotamase H.	
SOURCE:	E.Coli	
PURITY:	> 95% by SDS - PAGE	
MOL. WEIGHT:	19.2 kDa (177 aa – 1-177 aa).	
ENDOTOXIN LEVEL:	< 1.0 EU per 1 µg of protein (determined by LAL method)	
FORMULATION:	1 mg/ml solution in PBS (pH 7.4) containing 10% glycerol.	

STORAGE CONDITIONS:

Can be stored at 4°C short term (1-2 weeks). For long term storage, aliquot and store at -20°C or -70°C. Avoid repeated freezing and thawing cycles.

DESCRIPTION:

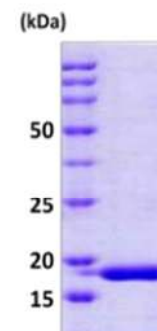
Cyclophilin H is a member of peptidyl-propyl cis-trans isomerase (PPlase) family, which catalyzes the cis-trans isomerization of proline imidic peptide bonds in oligopeptides and accelerates the folding of proteins. The cyclophilin H is a specific component of the human U4/U6 small nuclear ribonucleoprotein particle involved in the nuclear splicing of pre-mRNA. It stably associates with the U4/U6-60kD and -90kD proteins, the human orthologues of the *Saccharomyces cerevisiae* Prp4 and Prp3 splicing factors.

AMINO ACID SEQUENCE:

MAVANSSPVN PVVFFDVSIG GQEVGRMKIE LFADVVPKTA ENFRQFCTGE FRKDGVPIGY KGSTFHRVIK DFMIQGGDFV NGDGTGVASI YRGPFDENF KLRHSAPGLL SMANSGPSTN GCQFFITCSK CDWLDGKHVV FGKIIDGLLV MRKIENVPTG PNNKPPLPVV ISQCGEM

BIOLOGICAL ACTIVITY:

Specific activity is > 220 nmoles/min/mg, and is defined as the amount of enzyme that cleaves 1 µmole of Suc-AAFP-pNA per minute at 25°C in Tris HCl pH 8.0 using chymotrypsin.



15% SDS-PAGE (3µg)

Human Recombinant Cyclophilin H

RELATED PRODUCTS:

- Cyclosporine A (Cat. No. 1522-100, 1G)
- Human Recombinant Cyclophilin B (Cat. No. 6310-100)
- Human Recombinant Cyclophilin A (Cat. No. 6311-100)
- Human Recombinant Cyclophilin D (Cat. No. 6312-100)

FOR RESEARCH USE ONLY! Not to be used in humans.