

Human Recombinant Cyclophilin E

CATALOG #:	6314-100	100 µg
ALTERNATE NAMES:	Peptidylprolyl isomerase E isoform 1, PPIE, CYP-33, Cyclophilin E, PPlase E, Rotamase E.	
SOURCE:	E.Coli	
PURITY:	> 95% by SDS - PAGE	
MOL. WEIGHT:	37.5 kDa (337 aa – 1-301 aa + His Tag).	
FORMULATION:	1 mg/ml solution in 20 mM Tris-HCl buffer (pH 8.0)	

STORAGE CONDITIONS:

Can be stored at 4°C short term (1-2 weeks). For long term storage, aliquot and store at -20°C or -70°C. Avoid repeated freezing and thawing cycles.

DESCRIPTION:

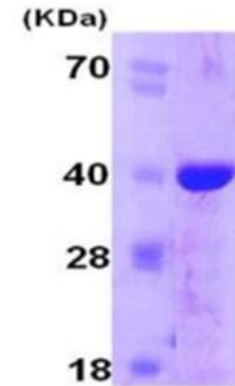
Cyclophilins possess the activity of peptidyl-prolyl cis-trans isomerase (PPIase) and are involved in cellular protein folding and protein interactions. PPIE contains two RNA binding domains at the N-terminal region and a PPIase domain at the C-terminal region. The cellular and physiological roles of PPIE are still not known.

AMINO ACID SEQUENCE:

MRGSHHHHHH GMASMTGGQQ MGRDLYDDDD KDRWGSMATT KRVLYVGGLA
EEVDDKVLHA AFIPFGDITD IQIPLDYETE KHRGFVFEV ELAEDAAAAI DNMNESELF
RTIRVNLAKP MRIKEGSSRP VWSDDDWLKK FSGKTLEENK EEEGSEPPKA
ETQEGEPIAK KARSNPQVYM DIKIGNKPAG RIQMLLRSDV VPMTAENFRC LCTHEKGF
KGSSFHRIIP QFMCQGGDFT NHNGTGGKSI YGKKFDDENF ILKHTGPGLL
SMANSGPNTN GSQFFLTCDK TDWLDGKHVV FGEVTEGLDV LRQIEAQGSK
DGKPKQKVII ADCGEYV

BIOLOGICAL ACTIVITY:

Specific activity is > 210 nmoles/min/mg, and is defined as the amount of enzyme that cleaves 1 µmole of Suc-AAFP-pNA per minute at 25°C in Tris HCl pH 8.0 using chymotrypsin.



15% SDS-PAGE (3ug)

Human Recombinant Cyclophilin E

RELATED PRODUCTS:

- Cyclosporine A (Cat. No. 1522-100, 1G)
- Human Recombinant Cyclophilin B (Cat. No. 6310-100)
- Human Recombinant Cyclophilin A (Cat. No. 6311-100)
- Human Recombinant Cyclophilin D (Cat. No. 6312-100)
- Human Recombinant Cyclophilin H (Cat. No. 6313-100)

FOR RESEARCH USE ONLY! Not to be used in humans.