

Human Recombinant Cyclophilin F

CATALOG #:	6315-100	100 µg
ALTERNATE NAMES:	Peptidylprolyl isomerase F, PPIF, CYP3, Cyp-D.	
SOURCE:	E.Coli	
PURITY:	> 95% by SDS - PAGE	
MOL. WEIGHT:	21 kDa (198 aa – 30-207 aa).	
ENDOTOXIN LEVEL:	< 1.0 EU per 1 µg of protein (determined by LAL method)	
FORMULATION:	1 mg/ml solution in 20 mM Tris-HCl buffer (pH 7.5) containing 1 mM DTT 10% glycerol.	

STORAGE CONDITIONS:

Can be stored at 4°C short term (1-2 weeks). For long term storage, aliquot and store at -20°C or -70°C. Avoid repeated freezing and thawing cycles.

DESCRIPTION:

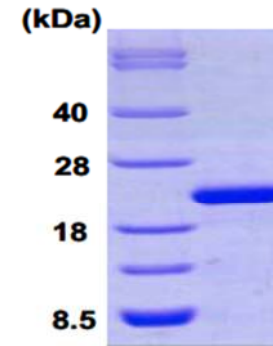
Cyclophilin F is a member of peptidyl-prolyl cis-trans isomerase family. They are highly-conserved cytoplasmic enzymes that accelerate protein folding. It is a part of the mitochondrial permeability transition pore in the inner mitochondrial membrane. Activation of this pore is thought to be involved in the induction of apoptotic and necrotic cell death.

AMINO ACID SEQUENCE:

MGSSHHHHHH SSGLVPRGSH PSFMCQAGDF TNHNGTGGKS IYGSRFPDEN
FTLKHVGPV LSMANAGPNT NGSQFFICTI KTDWLDGKHV VFGHVKEGMD VVKKIESFGS
KSGRTSKKIV ITDCGQLS

BIOLOGICAL ACTIVITY:

Specific activity is > 250 nmoles/min/mg, and is defined as the amount of enzyme that cleaves 1 µmole of Suc-AAFP-pNA per minute at 25°C in Tris HCl pH 8.0 using chymotrypsin.



15% SDS-PAGE (3ug)

Human Recombinant Cyclophilin F

RELATED PRODUCTS:

- Cyclosporine A (Cat. No. 1522-100, 1G)
- Human Recombinant Cyclophilin B (Cat. No. 6310-100)
- Human Recombinant Cyclophilin A (Cat. No. 6311-100)
- Human Recombinant Cyclophilin D (Cat. No. 6312-100)
- Human Recombinant Cyclophilin H (Cat. No. 6313-100)
- Human Recombinant Cyclophilin E (Cat. No. 6314-100)

FOR RESEARCH USE ONLY! Not to be used in humans.