

Human Recombinant Cyclophilin G

CATALOG #: 6316-100 100 µg

ALTERNATE NAMES: Peptidyl-prolyl cis-trans isomerase G, PPlase G, Rotamase G, PPIG, peptidylprolyl isomerase G, Peptidyl-prolyl isomerase G, Rotamase G, Clk-associating RS-cyclophilin, CARS-cyclophilin, CARS-Cyp, SR-cyclophilin, SR-cyp, SRcyp, CASP10, CYP, MGC133241.

SOURCE: E.Coli

PURITY: > 95% by SDS - PAGE

MOL. WEIGHT: 21.6 kDa (195 aa – 1-175 aa + His Tag (NT)).

FORMULATION: 1 mg/ml solution in 20 mM Tris-HCl buffer (pH 8.0) containing 1 mM DTT, and 10% glycerol.

STORAGE CONDITIONS:

Can be stored at 4°C short term (1-2 weeks). For long term storage, aliquot and store at -20°C or -70°C. Avoid repeated freezing and thawing cycles.

DESCRIPTION:

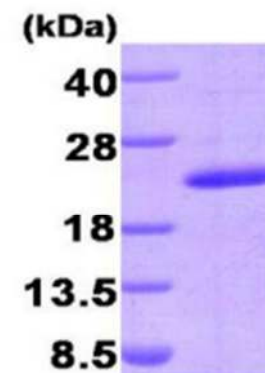
Peptidyl-prolyl cis-trans isomerase G (PPIG), also known as Cyclophilin G, is a member of peptidylprolyl cis-trans isomerase family (PPlases). This protein catalyzes the cis-trans isomerization of proline imidic peptide bonds in oligopeptides and is implicated in the folding, transport, and assembly of proteins. It is localized to the nuclear speckles, a nuclear compartment rich in splicing factors, and interacts with the splicing factors SC35 and pinin. Cyclophilin G also may play an important role in the regulation of pre-mRNA splicing.

AMINO ACID SEQUENCE:

MGSSHHHHHH SGLVPRGSH MGIVQRPRC FFDIANNQP AGRVVFELFS
 DVCPTKCFEN RCLCTGKGT GKSTQKPLHY KSCLFHRVVK DFMVQGGDFS
 EGNRGGESI YGGFFEDEF AVKHNFELL SMANRGKDTN GSQFFITTKP
 TPHLDGHHVV FGQVISGQEV VREIENQKTD AASKPFAEVR ILSCG

BIOLOGICAL ACTIVITY:

Specific activity is > 200 nmoles/min/mg, and is defined as the amount of enzyme that cleaves 1 µmole of Suc-AAFP-pNA per minute at 25°C in Tris HCl pH 8.0 using chymotrypsin.



15% SDS-PAGE (3ug)

Human Recombinant Cyclophilin G

RELATED PRODUCTS:

- Cyclosporine A (Cat. No. 1522-100, 1G)
- Human Recombinant Cyclophilin B (Cat. No. 6310-100)
- Human Recombinant Cyclophilin A (Cat. No. 6311-100)
- Human Recombinant Cyclophilin D (Cat. No. 6312-100)
- Human Recombinant Cyclophilin H (Cat. No. 6313-100)
- Human Recombinant Cyclophilin E (Cat. No. 6314-100)
- Human Recombinant Cyclophilin F (Cat. No. 6315-100)
- Human Recombinant PPI1 (Cat. No. 6317-100)

FOR RESEARCH USE ONLY! Not to be used in humans.

